

Overall Rank: 34

Change: ▼2

Determinants Rank: 34

Outcomes Rank: 28

Strengths:

- Low percentage of children in poverty
- Low levels of air pollution
- Strong per capita public health funding

Challenges:

- High rate of uninsured population
- High occupational fatalities rate
- High violent crime rate

Significant Changes:

- In the past year, the rate of preventable hospitalizations increased by 7%
- In the past five years, the rate of deaths from cardiovascular disease decreased by 16%
- In the past five years, the prevalence of smoking decreased by 18%
- In the past ten years, immunization coverage increased by 40%

Ranking: Alaska is 34th this year; it was 32nd in 2008.

Strengths: Strengths include a low percentage of children in poverty at 9.6 percent of persons under age 18, low levels of air pollution at 6.9 micrograms of fine particulate per cubic meter, strong public health funding at \$171 per person and a low rate of deaths from cardiovascular disease at 235.8 deaths per 100,000 population.

Challenges: Challenges include a high rate of uninsured population at 19.0 percent, a low high school graduation rate with 66.5 percent of incoming ninth graders who graduate within four years, high geographic disparity within the state at 19.4 percent, a high violent crime rate at 652 offenses per 100,000 population and a high occupational fatalities rate at 13.0 deaths per 100,000 workers. Alaska ranks lower for determinants than for health outcomes, indicating that overall healthiness may decline over time.

Significant Changes:

- ▲ In the past year, the rate of preventable hospitalizations increased from 58.2 to 62.4 discharges per 1,000 Medicare enrollees.

▼ In the past five years, the rate of deaths from cardiovascular disease declined from 279.5 to 235.8 deaths per 100,000 population.

▼ In the past five years, the prevalence of smoking decreased from 26.2 percent to 21.5 percent of the population.

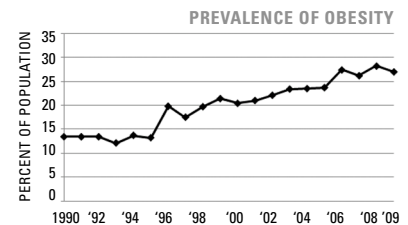
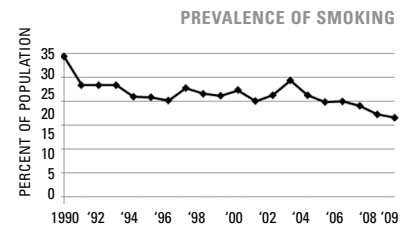
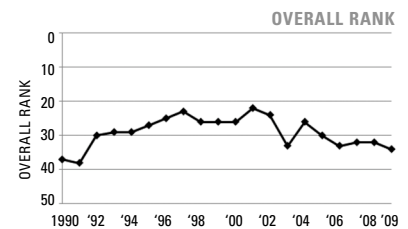
▲ In the past ten years, immunization coverage increased from 54.3 percent to 76.2 percent of children ages 19 to 35 months receiving complete immunizations.

Health Disparities: In Alaska, smoking is more prevalent among non-Hispanic American Indians and Alaskan Natives at 39.9 percent than non-Hispanic whites at 19.0 percent. Mortality rates vary considerably by race and ethnicity in Alaska, with 1,054.4 deaths per 100,000 population among American Indians and Alaskan Natives compared to whites, who experience 735.2 deaths per 100,000 population.

State Health Department Web Site: health.hss.state.ak.us

DETERMINANTS	2009		NO. 1 STATE
	VALUE	RANK	
BEHAVIORS			
Prevalence of Smoking (Percent of population)	21.5	40	9.3
Prevalence of Binge Drinking (Percent of population)	17.6	37	9.0
Prevalence of Obesity (Percent of population)	27.0	29	19.1
High School Graduation (Percent of incoming ninth graders)	66.5	43	87.5
COMMUNITY & ENVIRONMENT			
Violent Crime (Offenses per 100,000 population)	652	44	118
Occupational Fatalities (Deaths per 100,000 workers)	13.0	50	3.1
Infectious Disease (Cases per 100,000 population)	15.8	30	2.4
Children in Poverty (Percent of persons under age 18)	9.6	3	8.6
Air Pollution (Micrograms of fine particles per cubic meter)	6.9	5	4.8
PUBLIC & HEALTH POLICIES			
Lack of Health Insurance (Percent without health insurance)	19.0	46	5.4
Public Health Funding (Dollars per person)	\$171	3	\$220
Immunization Coverage (Percent of children ages 19 to 35 months)	76.2	32	85.0
CLINICAL CARE			
Prenatal Care (Percent of pregnant women)*	56.8	—	—
Primary Care Physicians (Number per 100,000 population)	112.3	28	190.0
Preventable Hospitalizations (Number per 1,000 Medicare enrollees)	62.4	14	29.3
ALL DETERMINANTS			
	-0.13	34	0.83
HEALTH OUTCOMES			
Poor Mental Health Days (Days in previous 30 days)	3.2	19	2.2
Poor Physical Health Days (Days in previous 30 days)	3.4	21	2.7
Geographic Disparity (Relative standard deviation)	19.4	48	4.3
Infant Mortality (Deaths per 1,000 live births)	6.4	20	4.8
Cardiovascular Deaths (Deaths per 100,000 population)	235.8	5	212.6
Cancer Deaths (Deaths per 100,000 population)	185.7	17	144.7
Premature Death (Years lost per 100,000 population)	7,898	32	5,595
ALL HEALTH OUTCOMES			
	0.04	28	0.35
OVERALL			
	-0.09	34	1.06

ECONOMIC ENVIRONMENT	
Unemployment Rate (Aug 2009)	8.3%
Underemployment Rate (2008)	12.0%
Median Household Income (2008)	\$63,989



— indicates data not available. *See measure description for full details.