

Ranking: Alabama is 48th this year; it was 46th in 2008.

Strengths: Strengths include a low prevalence of binge drinking at 11.4 percent of the population, low geographic disparity within the state at 8.6 percent and high public health funding at \$97 per person. Alabama ranks higher for health determinants than for health outcomes, indicating that overall healthiness may improve over time.

Challenges: Challenges include a high prevalence of obesity at 32.2 percent of the population, high levels of air pollution at 13.5 micrograms of fine particulate per cubic meter, a high percentage of children in poverty at 23.7 percent of persons under age 18, a high premature death rate with 10,116 years of potential life lost before age 75 per 100,000 population, a high rate of deaths from cardiovascular disease at 358.8 deaths per 100,000 population and a high infant mortality rate at 9.2 deaths per 1,000 live births.

Significant Changes:

▼ In the past year, the rate of uninsured population declined from 13.6 percent to 11.9 percent.

- ▼ In the past five years, the prevalence of smoking decreased from 25.3 percent to 22.1 percent of the population.
- ▲ In the past ten years, immunization coverage increased from 45.8 percent to 76.3 percent of children ages 19 to 35 months receiving complete immunizations.
- ▼ Since 1990, the prevalence of obesity increased from 12.3 percent to 32.2 percent of the population.

Health Disparities: In Alabama, obesity is more prevalent among non-Hispanic blacks at 41.1 percent than non-Hispanic whites at 28.2 percent. The prevalence of diabetes also varies by race and ethnicity in the state; 12.9 percent of non-Hispanic blacks have diabetes compared to 9.6 percent of non-Hispanic whites. In addition, mortality rates vary considerably in Alabama, with 1,147.2 deaths per 100,000 population among blacks compared to Hispanics, who experience 313.7 deaths per 100,000 population.

State Health Department Web Site:
www.adph.org

Overall Rank: 48

Change: ▼ 2

Determinants Rank: 43

Outcomes Rank: 49

Strengths:

- Low prevalence of binge drinking
- High per capita public health funding
- Low geographic disparity within the state

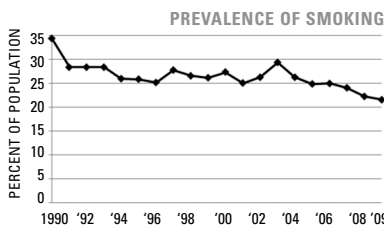
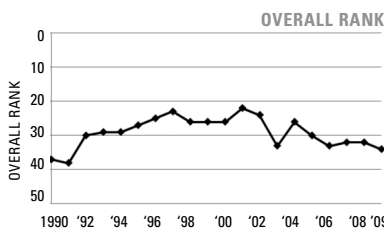
Challenges:

- High prevalence of obesity
- High percentage of children in poverty
- High levels of air pollution

Significant Changes:

- In the past year, the rate of uninsured population declined by 13%
- In the past five years, the prevalence of smoking decreased by 13%
- In the past ten years, immunization coverage increased by 67%
- Since 1990, the prevalence of obesity increased by 162%

ECONOMIC ENVIRONMENT	
Unemployment Rate (Aug 2009)	10.4%
Underemployment Rate (2008)	9.8%
Median Household Income (2008)	\$44,476



DETERMINANTS	2009		NO. 1 STATE
	VALUE	RANK	
BEHAVIORS			
Prevalence of Smoking (Percent of population)	22.1	41	9.3
Prevalence of Binge Drinking (Percent of population)	11.4	6	9.0
Prevalence of Obesity (Percent of population)	32.2	49	19.1
High School Graduation (Percent of incoming ninth graders)	66.2	44	87.5
COMMUNITY & ENVIRONMENT			
Violent Crime (Offenses per 100,000 population)	453	32	118
Occupational Fatalities (Deaths per 100,000 workers)	6.2	38	3.1
Infectious Disease (Cases per 100,000 population)	15.9	31	2.4
Children in Poverty (Percent of persons under age 18)	23.7	47	8.6
Air Pollution (Micrograms of fine particles per cubic meter)	13.5	45	4.8
PUBLIC & HEALTH POLICIES			
Lack of Health Insurance (Percent without health insurance)	11.9	18	5.4
Public Health Funding (Dollars per person)	\$97	14	\$220
Immunization Coverage (Percent of children ages 19 to 35 months)	76.3	31	85.0
CLINICAL CARE			
Prenatal Care (Percent of pregnant women)*	76.0	—	—
Primary Care Physicians (Number per 100,000 population)	100.7	40	190.0
Preventable Hospitalizations (Number per 1,000 Medicare enrollees)	89.7	43	29.3
ALL DETERMINANTS			
	-0.31	43	0.83
HEALTH OUTCOMES			
Poor Mental Health Days (Days in previous 30 days)	4.1	47	2.2
Poor Physical Health Days (Days in previous 30 days)	4.2	46	2.7
Geographic Disparity (Relative standard deviation)	8.6	12	4.3
Infant Mortality (Deaths per 1,000 live births)	9.2	48	4.8
Cardiovascular Deaths (Deaths per 100,000 population)	358.8	49	212.6
Cancer Deaths (Deaths per 100,000 population)	211.4	44	144.7
Premature Death (Years lost per 100,000 population)	10,116	48	5595
ALL HEALTH OUTCOMES			
	-0.23	49	0.35
OVERALL			
	-0.55	48	1.06

— indicates data not available. *See measure description for full details.