

Ranking: Arizona is 27th this year, unchanged from 2008.

Strengths: Strengths include a low prevalence of smoking at 15.9 percent of the population, a low rate of preventable hospitalizations with 55.8 discharges per 1,000 Medicare enrollees, few poor physical health days per month at 3.2 days in the previous 30 days and low rates of deaths from cancer and cardiovascular disease, at 171.0 deaths and 239.9 deaths per 100,000 population, respectively.

Challenges: Challenges include a high percentage of children in poverty at 26.2 percent of persons under age 18, a high rate of uninsured population at 18.9 percent and limited availability of primary care physicians with 91.4 primary care physicians per 100,000 population.

Significant Changes:

▼ In the past year, the rate of preventable hospitalizations decreased from 61.5 to 55.8 discharges per 1,000 Medicare enrollees.

- ▼ In the past five years, the prevalence of smoking decreased from 20.8 percent to 15.9 percent of the population.
- ▲ In the past ten years, immunization coverage increased from 51.2 percent to 79.2 percent of children ages 19 to 35 months receiving complete immunizations.
- ▲ Since 1990, the prevalence of obesity increased from 10.8 percent to 25.5 percent of the population.

Health Disparities: In Arizona, obesity is more prevalent among Hispanics and non-Hispanic blacks at 32.0 percent and 32.9 percent, respectively than non-Hispanic whites at 22.4 percent. The prevalence of diabetes also varies by race and ethnicity in the state; 13.1 percent of non-Hispanic blacks have diabetes compared to 9.7 percent of Hispanics and 7.6 percent of non-Hispanic whites. Mortality rates vary considerably by race and ethnicity in Arizona, with 861.9 deaths per 100,000 population among blacks compared to Hispanics, who experience 690.1 deaths per 100,000 population.

State Health Department Web Site:
www.azdhs.gov

Overall Rank: 27

Change: no change

Determinants Rank: 27

Outcomes Rank: 23

Strengths:

- Low prevalence of smoking
- Low rate of preventable hospitalizations
- Low rates of cancer deaths and cardiovascular deaths

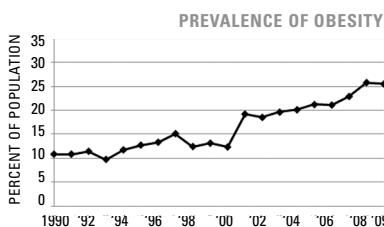
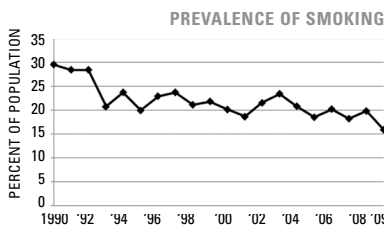
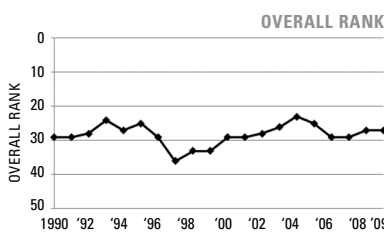
Challenges:

- High percentage of children in poverty
- High rate of uninsured population
- Limited availability of primary care physicians

Significant Changes:

- In the past year, the rate of preventable hospitalizations decreased by 9%
- In the past five years, the prevalence of smoking decreased by 24%
- In the past ten years, immunization coverage increased by 55%
- Since 1990, the prevalence of obesity increased by 136%

ECONOMIC ENVIRONMENT	
Unemployment Rate (Aug 2009)	9.1%
Underemployment Rate (2008)	10.7%
Median Household Income (2008)	\$46,914



DETERMINANTS	2009		NO. 1 STATE
	VALUE	RANK	
BEHAVIORS			
Prevalence of Smoking (Percent of population)	15.9	7	9.3
Prevalence of Binge Drinking (Percent of population)	15.3	23	9.0
Prevalence of Obesity (Percent of population)	25.5	18	19.1
High School Graduation (Percent of incoming ninth graders)	70.5	39	87.5
COMMUNITY & ENVIRONMENT			
Violent Crime (Offenses per 100,000 population)	447	30	118
Occupational Fatalities (Deaths per 100,000 workers)	4.4	16	3.1
Infectious Disease (Cases per 100,000 population)	16.0	32	2.4
Children in Poverty (Percent of persons under age 18)	26.2	50	8.6
Air Pollution (Micrograms of fine particles per cubic meter)	10.5	22	4.8
PUBLIC & HEALTH POLICIES			
Lack of Health Insurance (Percent without health insurance)	18.9	45	5.4
Public Health Funding (Dollars per person)	\$49	40	\$220
Immunization Coverage (Percent of children ages 19 to 35 months)	79.2	14	85.0
CLINICAL CARE			
Prenatal Care (Percent of pregnant women)*	67.7	—	—
Primary Care Physicians (Number per 100,000 population)	91.4	43	190.0
Preventable Hospitalizations (Number per 1,000 Medicare enrollees)	55.8	8	29.3
ALL DETERMINANTS	-0.04	27	0.83
HEALTH OUTCOMES			
Poor Mental Health Days (Days in previous 30 days)	3.1	12	2.2
Poor Physical Health Days (Days in previous 30 days)	3.2	8	2.7
Geographic Disparity (Relative standard deviation)	15.2	40	4.3
Infant Mortality (Deaths per 1,000 live births)	6.6	25	4.8
Cardiovascular Deaths (Deaths per 100,000 population)	239.9	6	212.6
Cancer Deaths (Deaths per 100,000 population)	171.0	5	144.7
Premature Death (Years lost per 100,000 population)	7,804	30	5,995
ALL HEALTH OUTCOMES	0.12	23	0.35
OVERALL	0.08	27	1.06

— indicates data not available. *See measure description for full details.