

Ranking: California is 23rd this year; it was 24th in 2008.

Strengths: Strengths include a low prevalence of smoking at 14.0 percent of the population, a low prevalence of obesity at 24.2 percent of the population, a low occupational fatalities rate at 3.2 deaths per 100,000 workers, a low infant mortality rate at 5.2 deaths per 1,000 live births, a low rate of cancer deaths at 173.9 deaths per 100,000 population and a low rate of preventable hospitalizations with 60.7 discharges per 1,000 Medicare enrollees.

Challenges: Challenges include high levels of air pollution at 13.9 micrograms of fine particulate per cubic meter, a high rate of uninsured population at 18.4 percent and a high incidence of infectious disease at 22.2 cases per 100,000 population. California ranks lower for determinants than for health outcomes, indicating that overall healthiness may decline over time.

Significant Changes:

▲ In the past year, the percentage of children in poverty increased from 17.9 percent to 20.2 percent of children under age 18.

- ▼ In the past year, the high school graduation rate decreased from 74.6 percent to 69.2 percent of incoming ninth graders who graduate within four years.
- ▼ In the past five years, the prevalence of smoking declined from 16.8 percent to 14.0 percent of the population.
- ▼ In the past ten years, immunization coverage increased from 57.7 percent to 80.6 percent of children ages 19 to 35 months receiving complete immunizations.

Health Disparities: In California, obesity is more prevalent among non-Hispanic blacks at 36.7 percent than non-Hispanic Asians at 6.6 percent. The prevalence of diabetes also varies by race and ethnicity in the state; 14.2 percent of non-Hispanic blacks have diabetes compared to 7.4 percent of non-Hispanic Asians. In addition, mortality rates vary considerably in California, with 1,014.9 deaths per 100,000 population among blacks compared to Asians, who experience 466.7 deaths per 100,000 population.

State Health Department Web Site:

www.dhs.ca.gov

Overall Rank: 23

Change: ▲ 1

Determinants Rank: 24

Outcomes Rank: 19

Strengths:

- Low prevalence of smoking
- Low prevalence of obesity
- Low infant mortality rate

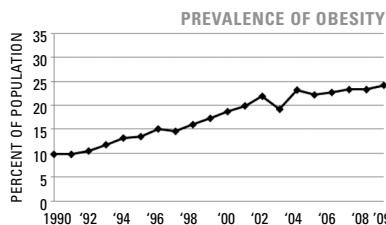
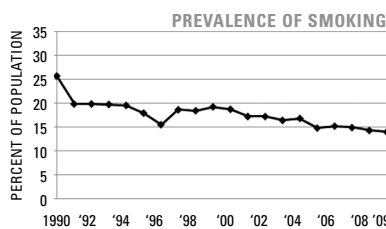
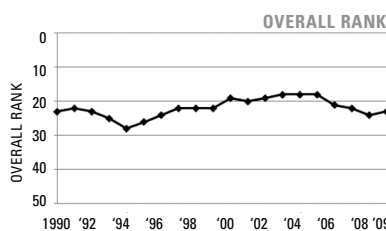
Challenges:

- High incidence of infectious disease
- High levels of air pollution
- High rate of uninsured population

Significant Changes:

- In the past year, the percentage of children in poverty increased by 13%
- In the past year, the high school graduation rate decreased by 7%
- In the past five years, the prevalence of smoking decreased by 17%
- In the past ten years, immunization coverage increased by 40%

ECONOMIC ENVIRONMENT	
Unemployment Rate (Aug 2009)	12.2%
Underemployment Rate (2008)	13.4%
Median Household Income (2008)	\$57,014



	2009		NO. 1 STATE
	VALUE	RANK	
DETERMINANTS			
Prevalence of Smoking (Percent of population)	14.0	2	9.3
Prevalence of Binge Drinking (Percent of population)	16.1	29	9.0
Prevalence of Obesity (Percent of population)	24.2	9	19.1
High School Graduation (Percent of incoming ninth graders)	69.2	40	87.5
BEHAVIORS			
COMMUNITY & ENVIRONMENT			
Violent Crime (Offenses per 100,000 population)	504	37	118
Occupational Fatalities (Deaths per 100,000 workers)	3.2	3	3.1
Infectious Disease (Cases per 100,000 population)	22.2	43	2.4
Children in Poverty (Percent of persons under age 18)	20.2	35	8.6
Air Pollution (Micrograms of fine particles per cubic meter)	13.9	47	4.8
PUBLIC & HEALTH POLICIES			
Lack of Health Insurance (Percent without health insurance)	18.4	44	5.4
Public Health Funding (Dollars per person)	\$113	10	\$220
Immunization Coverage (Percent of children ages 19 to 35 months)	80.6	11	85.0
CLINICAL CARE			
Prenatal Care (Percent of pregnant women)*	77.5	—	—
Primary Care Physicians (Number per 100,000 population)	118.7	21	190.0
Preventable Hospitalizations (Number per 1,000 Medicare enrollees)	60.7	10	29.3
ALL DETERMINANTS	0.13	24	0.83
HEALTH OUTCOMES			
Poor Mental Health Days (Days in previous 30 days)	3.7	41	2.2
Poor Physical Health Days (Days in previous 30 days)	3.7	38	2.7
Geographic Disparity (Relative standard deviation)	14.1	38	4.3
Infant Mortality (Deaths per 1,000 live births)	5.2	5	4.8
Cardiovascular Deaths (Deaths per 100,000 population)	279.6	26	212.6
Cancer Deaths (Deaths per 100,000 population)	173.9	6	144.7
Premature Death (Years lost per 100,000 population)	6,446	12	5,995
ALL HEALTH OUTCOMES	0.15	19	0.35
OVERALL	0.28	23	1.06

— indicates data not available. *See measure description for full details.