

Ranking: Connecticut is 7th this year; it was 2nd in 2008.

Strengths: Strengths include a low prevalence of smoking at 15.9 percent of the population, a low prevalence of obesity at 21.4 percent of the population, a low rate of uninsured population at 9.7 percent, ready availability of primary care physicians with 160.9 primary care physicians per 100,000 population, low geographic disparity within the state at 5.7 percent, a low occupational fatalities rate at 3.3 deaths per 100,000 workers and few poor physical health days per month at 2.9 days in the previous 30 days.

Challenges: Challenges include a high incidence of infectious disease at 17.8 cases per 100,000 population and low immunization coverage with 72.5 percent of children ages 19 to 35 months receiving complete immunizations.

Significant Changes:

▼ In the past year, immunization coverage decreased from 89.3 percent to 72.5 percent of children ages 19 to 35 months receiving complete immunizations.

▼ In the past five years, the rate of deaths from cardiovascular disease decreased from 294.3 to 251.3 deaths per 100,000 population.

▲ In the past ten years, the prevalence of obesity increased from 15.5 percent to 21.4 percent of the population.

▼ Since 1990, the prevalence of smoking decreased from 29.6 percent to 15.9 percent of the population.

Health Disparities: In Connecticut, obesity is more prevalent among non-Hispanic blacks at 31.7 percent than non-Hispanic whites at 20.7 percent. The prevalence of diabetes also varies by race and ethnicity in the state; 13.9 percent of non-Hispanic blacks have diabetes compared to 6.4 percent of non-Hispanic whites. In addition, mortality rates vary in Connecticut, with 835.9 deaths per 100,000 population among blacks compared to whites, who experience 739.8 deaths per 100,000 population.

State Health Department Web Site:

www.dph.state.ct.us

Overall Rank: 7

Change: ▼ 5

Determinants Rank: 6

Outcomes Rank: 7

Strengths:

- Low prevalence of smoking
- Low prevalence of obesity
- Low percentage of children in poverty
- Ready availability of primary care physicians

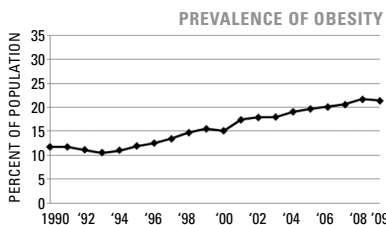
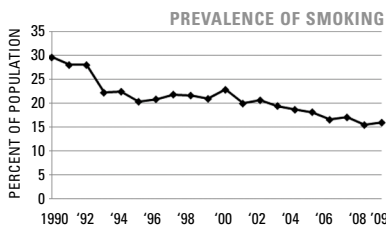
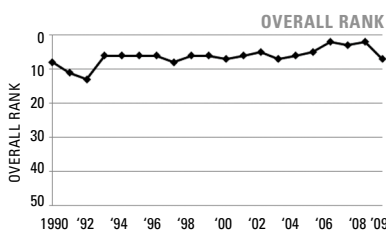
Challenges:

- Low immunization coverage
- High incidence of infectious disease

Significant Changes:

- In the past year, immunization coverage decreased by 19%
- In the past five years, the rate of deaths from cardiovascular disease decreased by 15%
- In the past ten years, the prevalence of obesity increased by 38%
- Since 1990, the prevalence of smoking decreased by 46%

ECONOMIC ENVIRONMENT	
Unemployment Rate (Aug 2009)	8.1%
Underemployment Rate (2008)	10.3%
Median Household Income (2008)	\$64,682



DETERMINANTS	2009		NO. 1 STATE
	VALUE	RANK	
BEHAVIORS			
Prevalence of Smoking (Percent of population)	15.9	7	9.3
Prevalence of Binge Drinking (Percent of population)	17.3	35	9.0
Prevalence of Obesity (Percent of population)	21.4	2	19.1
High School Graduation (Percent of incoming ninth graders)	80.9	13	87.5
COMMUNITY & ENVIRONMENT			
Violent Crime (Offenses per 100,000 population)	298	20	118
Occupational Fatalities (Deaths per 100,000 workers)	3.3	5	3.1
Infectious Disease (Cases per 100,000 population)	17.8	37	2.4
Children in Poverty (Percent of persons under age 18)	10.2	6	8.6
Air Pollution (Micrograms of fine particles per cubic meter)	11.5	30	4.8
PUBLIC & HEALTH POLICIES			
Lack of Health Insurance (Percent without health insurance)	9.7	7	5.4
Public Health Funding (Dollars per person)	\$60	33	\$220
Immunization Coverage (Percent of children ages 19 to 35 months)	72.5	44	85.0
CLINICAL CARE			
Prenatal Care (Percent of pregnant women)*	78.8	—	—
Primary Care Physicians (Number per 100,000 population)	160.9	6	190.0
Preventable Hospitalizations (Number per 1,000 Medicare enrollees)	65.9	18	29.3
ALL DETERMINANTS	0.52	6	0.83
HEALTH OUTCOMES			
Poor Mental Health Days (Days in previous 30 days)	3.1	12	2.2
Poor Physical Health Days (Days in previous 30 days)	2.9	3	2.7
Geographic Disparity (Relative standard deviation)	5.7	2	4.3
Infant Mortality (Deaths per 1,000 live births)	6.0	13	4.8
Cardiovascular Deaths (Deaths per 100,000 population)	251.3	11	212.6
Cancer Deaths (Deaths per 100,000 population)	190.2	19	144.7
Premature Death (Years lost per 100,000 population)	6,157	5	5,995
ALL HEALTH OUTCOMES	0.26	7	0.35
OVERALL	0.78	7	1.06

— indicates data not available. *See measure description for full details.