

**Ranking:** Minnesota is 6th this year; it was 3rd in 2008.

**Strengths:** Minnesota is among the top ten states on 11 of the 22 measures. Strengths include a low premature death rate with 5,595 years of potential life lost before age 75 per 100,000 population, a low rate of deaths from cardiovascular disease at 212.6 deaths per 100,000 population, a low infant mortality rate at 5.1 deaths per 1,000 live births, a low rate of uninsured population at 8.5 percent and a low occupational fatalities rate at 3.1 deaths per 100,000 workers.

**Challenges:** Challenges include low public health funding at \$41 per person and a moderate prevalence of binge drinking at 17.2 percent of the population. Minnesota ranks lower for health determinants than for health outcomes, indicating that overall healthiness may decline over time.

**Significant Changes:**

▼ In the past year, immunization coverage decreased from 84.7 percent to 77.4 percent of children ages 19 to 35 months receiving complete immunizations.

- ▲ In the past five years, the percentage of children in poverty increased from 9.7 percent to 15.6 percent of persons under age 18.
- ▲ In the past ten years, the prevalence of obesity increased from 16.2 percent to 25.1 percent of the population.
- ▼ Since 1990, the infant mortality rate declined from 8.9 to 5.1 deaths per 1,000 live births.

**Health Disparities:** In Minnesota, smoking is more prevalent among Hispanics at 25.2 percent than non-Hispanic whites at 16.9 percent. Mortality rates vary by race and ethnicity in Minnesota, with 697.3 deaths per 100,000 population among whites compared to Hispanics, who experience 405.5 deaths per 100,000 population.

**State Health Department Web Site:**  
www.health.state.mn.us

**Overall Rank: 6**

**Change: ▼ 3**

**Determinants Rank: 7**

**Outcomes Rank: 1**

**Strengths:**

- Low premature death rate
- Low rate of deaths from cardiovascular disease
- Low rate of uninsured population
- High rate of high school graduation

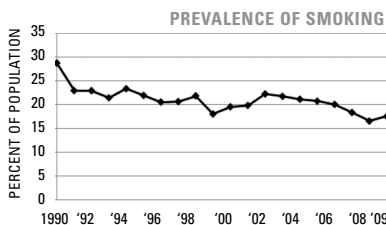
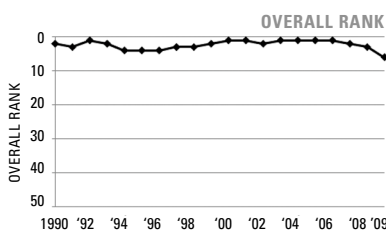
**Challenges:**

- Low per capita public health funding
- Moderate prevalence of binge drinking

**Significant Changes:**

- In the past year, immunization coverage declined by 9%
- In the past five years, the percentage of children in poverty increased by 61%
- In the past ten years, the prevalence of obesity increased by 55%
- Since 1990, the infant mortality rate decreased by 43%

ECONOMIC ENVIRONMENT	
Unemployment Rate (Aug 2009)	8.0%
Underemployment Rate (2008)	10.2%
Median Household Income (2008)	\$54,925



	2009		NO. 1 STATE
	VALUE	RANK	
<b>DETERMINANTS</b>			
Prevalence of Smoking (Percent of population)	17.5	17	9.3
Prevalence of Binge Drinking (Percent of population)	17.2	34	9.0
Prevalence of Obesity (Percent of population)	25.1	13	19.1
High School Graduation (Percent of incoming ninth graders)	86.2	4	87.5
<b>COMMUNITY &amp; ENVIRONMENT</b>			
Violent Crime (Offenses per 100,000 population)	263	13	118
Occupational Fatalities (Deaths per 100,000 workers)	3.1	1	3.1
Infectious Disease (Cases per 100,000 population)	9.2	14	2.4
Children in Poverty (Percent of persons under age 18)	15.6	18	8.6
Air Pollution (Micrograms of fine particles per cubic meter)	8.6	13	4.8
<b>PUBLIC &amp; HEALTH POLICIES</b>			
Lack of Health Insurance (Percent without health insurance)	8.5	3	5.4
Public Health Funding (Dollars per person)	\$41	46	\$220
Immunization Coverage (Percent of children ages 19 to 35 months)	77.4	26	85.0
<b>CLINICAL CARE</b>			
Prenatal Care (Percent of pregnant women)*	70.2	—	—
Primary Care Physicians (Number per 100,000 population)	139.5	9	190.0
Preventable Hospitalizations (Number per 1,000 Medicare enrollees)	57.8	9	29.3
<b>ALL DETERMINANTS</b>	0.48	7	0.83
<b>HEALTH OUTCOMES</b>			
Poor Mental Health Days (Days in previous 30 days)	2.7	3	2.2
Poor Physical Health Days (Days in previous 30 days)	2.9	3	2.7
Geographic Disparity (Relative standard deviation)	10.8	23	4.3
Infant Mortality (Deaths per 1,000 live births)	5.1	4	4.8
Cardiovascular Deaths (Deaths per 100,000 population)	212.6	1	212.6
Cancer Deaths (Deaths per 100,000 population)	181.4	9	144.7
Premature Death (Years lost per 100,000 population)	5,595	1	5,595
<b>ALL HEALTH OUTCOMES</b>	0.35	1	0.35
<b>OVERALL</b>	0.83	6	1.06

— indicates data not available. \*See measure description for full details.