

Ranking: Missouri is 38th this year, unchanged from 2008.

Strengths: Strengths include a high rate of high school graduation with 81.0 percent of incoming ninth graders who graduate within four years, a low incidence of infectious disease at 11.9 cases per 100,000 population and a moderate rate of uninsured population at 12.6 percent.

Challenges: Challenges include a high prevalence of smoking at 24.9 percent of the population, low public health funding at \$42 per person, a high rate of deaths from cardiovascular disease at 318.3 deaths per 100,000 population and many poor physical health days per month at 3.8 days in the previous 30 days.

Significant Changes:

- ▼ In the past year, the infant mortality rate decreased from 8.1 to 7.5 deaths per 1,000 live births.
- ▲ In the past five years, the percentage of children in poverty increased from 14.7 percent to 18.7 percent of persons under age 18.

- ▲ In the past ten years, immunization coverage increased from 50.5 percent to 76.0 percent of children ages 19 to 35 months receiving complete immunizations.
- ▲ Since 1990, the prevalence of obesity increased from 11.9 percent to 29.0 percent of the population.

Health Disparities: In Missouri, obesity is more prevalent among non-Hispanic blacks at 37.2 percent than non-Hispanic whites at 27.3 percent. The prevalence of diabetes also varies by race and ethnicity in the state; 9.3 percent of non-Hispanic blacks have diabetes compared to 7.9 percent of non-Hispanic whites. In addition, mortality rates vary in Missouri, with 1,116.9 deaths per 100,000 population among blacks compared to whites, who experience 855.3 deaths per 100,000 population.

State Health Department Web Site:
www.dhss.mo.gov

Overall Rank: 38

Change: no change

Determinants Rank: 37

Outcomes Rank: 39

Strengths:

- High rate of high school graduation
- Moderate incidence of infectious disease
- Moderate rate of uninsured population

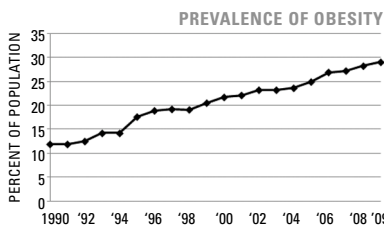
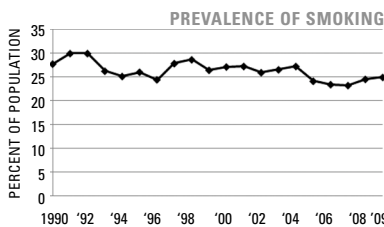
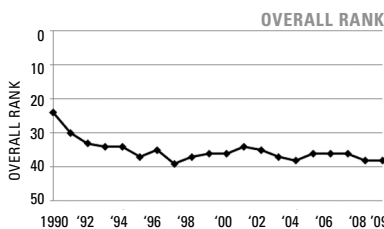
Challenges:

- High prevalence of smoking
- Low per capita public health funding
- High rate of deaths from cardiovascular disease

Significant Changes:

- In the past year, the infant mortality rate decreased by 7%
- In the past five years, the percentage of children in poverty increased by 27%
- In the past ten years, immunization coverage increased by 50%
- Since 1990, the prevalence of obesity increased by 144%

ECONOMIC ENVIRONMENT	
Unemployment Rate (Aug 2009)	9.5%
Underemployment Rate (2008)	10.1%
Median Household Income (2008)	\$46,038



DETERMINANTS	2009		NO. 1 STATE
	VALUE	RANK	
BEHAVIORS			
Prevalence of Smoking (Percent of population)	24.9	47	9.3
Prevalence of Binge Drinking (Percent of population)	15.8	25	9.0
Prevalence of Obesity (Percent of population)	29.0	39	19.1
High School Graduation (Percent of incoming ninth graders)	81.0	12	87.5
COMMUNITY & ENVIRONMENT			
Violent Crime (Offenses per 100,000 population)	504	38	118
Occupational Fatalities (Deaths per 100,000 workers)	5.9	33	3.1
Infectious Disease (Cases per 100,000 population)	11.9	24	2.4
Children in Poverty (Percent of persons under age 18)	18.7	27	8.6
Air Pollution (Micrograms of fine particles per cubic meter)	11.9	33	4.8
PUBLIC & HEALTH POLICIES			
Lack of Health Insurance (Percent without health insurance)	12.6	21	5.4
Public Health Funding (Dollars per person)	\$42	44	\$220
Immunization Coverage (Percent of children ages 19 to 35 months)	76.0	35	85.0
CLINICAL CARE			
Prenatal Care (Percent of pregnant women)*	74.4	—	—
Primary Care Physicians (Number per 100,000 population)	107.0	32	190.0
Preventable Hospitalizations (Number per 1,000 Medicare enrollees)	81.6	40	29.3
ALL DETERMINANTS			
	-0.19	37	0.83
HEALTH OUTCOMES			
Poor Mental Health Days (Days in previous 30 days)	3.6	35	2.2
Poor Physical Health Days (Days in previous 30 days)	3.8	42	2.7
Geographic Disparity (Relative standard deviation)	11.1	24	4.3
Infant Mortality (Deaths per 1,000 live births)	7.5	34	4.8
Cardiovascular Deaths (Deaths per 100,000 population)	318.3	42	212.6
Cancer Deaths (Deaths per 100,000 population)	207.4	39	144.7
Premature Death (Years lost per 100,000 population)	8,284	37	5,995
ALL HEALTH OUTCOMES			
	-0.05	39	0.35
OVERALL			
	-0.24	38	1.06

— indicates data not available. *See measure description for full details.