

Ranking: North Carolina is 37th this year, unchanged from 2008.

Strengths: Strengths include a low prevalence of binge drinking at 12.6 percent of the population and a low occupational fatalities rate at 4.8 deaths per 100,000 workers.

Challenges: Challenges include a high prevalence of obesity at 29.5 percent of the population, low immunization coverage with 72.4 percent of children ages 19 to 35 months receiving complete immunizations, a high infant mortality rate at 8.4 deaths per 1,000 live births and a high premature death rate with 8,401 years of potential life lost before age 75 per 100,000 population.

Significant Changes:

- ▼ In the past year, the rate of uninsured population decreased from 17.2 percent to 15.9 percent.
- ▼ In the past five years, the percentage of children in poverty decreased from 23.1 percent to 19.4 percent of persons under age 18.

- ▲ In the past ten years, the prevalence of obesity increased from 19.4 percent to 29.5 percent of the population.
- ▼ Since 1990, the prevalence of smoking decreased from 31.6 percent to 20.9 percent of the population.

Health Disparities: In North Carolina, obesity is more prevalent among non-Hispanic blacks at 40.0 percent than non-Hispanic whites at 25.9 percent. The prevalence of diabetes also varies by race and ethnicity in the state; 14.3 percent of non-Hispanic blacks have diabetes compared to 8.5 percent of non-Hispanic whites. In addition, mortality rates vary in North Carolina, with 1,056.9 deaths per 100,000 population among blacks compared to whites, who experience 839.7 deaths per 100,000 population.

State Health Department Web Site:
www.dhhs.state.nc.us

Overall Rank: 37

Change: no change

Determinants Rank: 36

Outcomes Rank: 38

Strengths:

- Low prevalence of binge drinking
- Low occupational fatalities rate

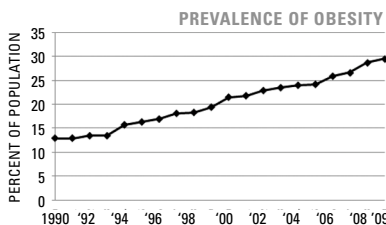
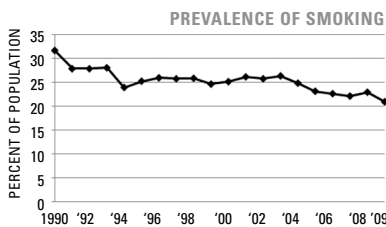
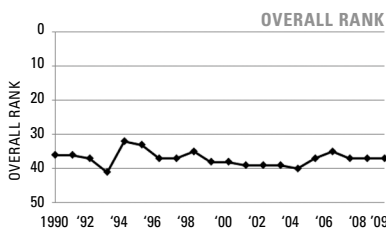
Challenges:

- High prevalence of obesity
- Low immunization coverage
- High infant mortality rate
- High premature death rate

Significant Changes:

- In the past year, the rate of uninsured population decreased by 8%
- In the past five years, the percentage of children in poverty decreased by 16%
- In the past ten years, the prevalence of obesity increased by 52%
- Since 1990, the prevalence of smoking decreased by 34%

ECONOMIC ENVIRONMENT	
Unemployment Rate (Aug 2009)	10.8%
Underemployment Rate (2008)	11.3%
Median Household Income (2008)	\$42,930



	2009		NO. 1 STATE
	VALUE	RANK	
DETERMINANTS			
Prevalence of Smoking (Percent of population)	20.9	37	9.3
Prevalence of Binge Drinking (Percent of population)	12.6	10	9.0
Prevalence of Obesity (Percent of population)	29.5	41	19.1
High School Graduation (Percent of incoming ninth graders)	71.8	37	87.5
COMMUNITY & ENVIRONMENT			
Violent Crime (Offenses per 100,000 population)	467	33	118
Occupational Fatalities (Deaths per 100,000 workers)	4.8	19	3.1
Infectious Disease (Cases per 100,000 population)	18.0	38	2.4
Children in Poverty (Percent of persons under age 18)	19.4	32	8.6
Air Pollution (Micrograms of fine particles per cubic meter)	12.6	36	4.8
PUBLIC & HEALTH POLICIES			
Lack of Health Insurance (Percent without health insurance)	15.9	34	5.4
Public Health Funding (Dollars per person)	\$51	38	\$220
Immunization Coverage (Percent of children ages 19 to 35 months)	72.4	45	85.0
CLINICAL CARE			
Prenatal Care (Percent of pregnant women)*	77.0	—	—
Primary Care Physicians (Number per 100,000 population)	115.6	25	190.0
Preventable Hospitalizations (Number per 1,000 Medicare enrollees)	70.2	25	29.3
ALL DETERMINANTS	-0.17	36	0.83
HEALTH OUTCOMES			
Poor Mental Health Days (Days in previous 30 days)	3.4	28	2.2
Poor Physical Health Days (Days in previous 30 days)	3.7	38	2.7
Geographic Disparity (Relative standard deviation)	10.6	22	4.3
Infant Mortality (Deaths per 1,000 live births)	8.4	44	4.8
Cardiovascular Deaths (Deaths per 100,000 population)	294.7	33	212.6
Cancer Deaths (Deaths per 100,000 population)	201.5	35	144.7
Premature Death (Years lost per 100,000 population)	8,401	40	5,995
ALL HEALTH OUTCOMES	-0.04	38	0.35
OVERALL	-0.21	37	1.06

— indicates data not available. *See measure description for full details.