

Ranking: Nebraska is 16th this year; it was 9th in 2008.

Strengths: Strengths include a high rate of high school graduation with 87.0 percent of incoming ninth graders who graduate in four years, few poor mental and physical health days per month at 2.5 days and 2.7 days in the previous 30 days, respectively, low levels of air pollution at 8.0 micrograms of fine particulate per cubic meter and a low infant mortality rate at 5.6 deaths per 1,000 live births.

Challenges: Challenges include a high prevalence of binge drinking at 18.6 percent of the population and low immunization coverage with 74.8 percent of children ages 19 to 35 months receiving complete immunizations. Nebraska ranks lower for determinants than for health outcomes, indicating that overall healthiness may decline over time.

Significant Changes:

▼ In the past year, immunization coverage decreased from 85.2 percent to 74.8 percent of children ages 19 to 35 months receiving complete immunizations.

- ▲ In the past five years, the percentage of children in poverty increased from 11.0 percent to 16.2 percent of persons under age 18.
- ▼ In the past ten years, the prevalence of smoking declined from 22.0 percent to 18.3 percent of the population.
- ▲ Since 1990, the prevalence of obesity increased from 11.6 percent to 27.2 percent of the population.

Health Disparities: In Nebraska, obesity is more prevalent among non-Hispanic blacks at 37.0 percent than non-Hispanic whites at 26.6 percent. The prevalence of diabetes also varies by race and ethnicity in the state; 10.4 percent of non-Hispanic blacks have diabetes compared to 7.4 percent of non-Hispanic whites. In addition, mortality rates vary in Nebraska, with 1,016.2 deaths per 100,000 population among blacks compared to whites, who experience 752.1 deaths per 100,000 population.

State Health Department Web Site:
www.hhs.state.ne.us

Overall Rank: 16

Change: ▼7

Determinants Rank: 21

Outcomes Rank: 3

Strengths:

- High rate of high school graduation
- Few poor mental and physical health days per month
- Low levels of air pollution
- Low infant mortality rate

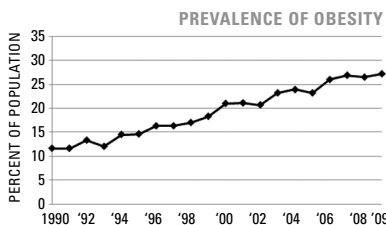
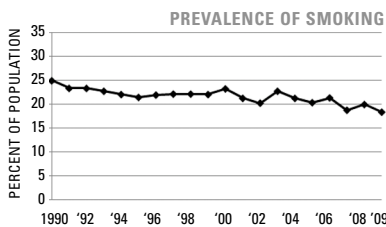
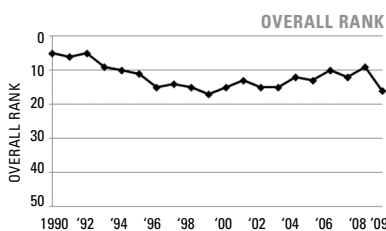
Challenges:

- High prevalence of binge drinking
- Low immunization coverage

Significant Changes:

- In the past year, immunization coverage decreased by 12%
- In the past five years, the percentage of children in poverty increased by 47%
- In the past ten years, the prevalence of smoking declined by 17%
- Since 1990, the prevalence of obesity increased by 134%

ECONOMIC ENVIRONMENT	
Unemployment Rate (Aug 2009)	5.0%
Underemployment Rate (2008)	6.1%
Median Household Income (2008)	\$50,728



	2009		NO. 1 STATE
	VALUE	RANK	
DETERMINANTS			
Prevalence of Smoking (Percent of population)	18.3	25	9.3
Prevalence of Binge Drinking (Percent of population)	18.6	46	9.0
Prevalence of Obesity (Percent of population)	27.2	30	19.1
High School Graduation (Percent of incoming ninth graders)	87.0	2	87.5
BEHAVIORS			
Violent Crime (Offenses per 100,000 population)	304	21	118
Occupational Fatalities (Deaths per 100,000 workers)	6.0	36	3.1
Infectious Disease (Cases per 100,000 population)	9.8	17	2.4
Children in Poverty (Percent of persons under age 18)	16.2	19	8.6
Air Pollution (Micrograms of fine particles per cubic meter)	8.0	10	4.8
COMMUNITY & ENVIRONMENT			
Lack of Health Insurance (Percent without health insurance)	12.6	21	5.4
Public Health Funding (Dollars per person)	\$70	26	\$220
Immunization Coverage (Percent of children ages 19 to 35 months)	74.8	36	85.0
PUBLIC & HEALTH POLICIES			
Prenatal Care (Percent of pregnant women)*	66.7	—	—
Primary Care Physicians (Number per 100,000 population)	116.5	22	190.0
Preventable Hospitalizations (Number per 1,000 Medicare enrollees)	69.4	24	29.3
CLINICAL CARE			
ALL DETERMINANTS	0.21	21	0.83
HEALTH OUTCOMES			
Poor Mental Health Days (Days in previous 30 days)	2.5	2	2.2
Poor Physical Health Days (Days in previous 30 days)	2.7	1	2.7
Geographic Disparity (Relative standard deviation)	12.5	33	4.3
Infant Mortality (Deaths per 1,000 live births)	5.6	8	4.8
Cardiovascular Deaths (Deaths per 100,000 population)	253.4	13	212.6
Cancer Deaths (Deaths per 100,000 population)	183.9	13	144.7
Premature Death (Years lost per 100,000 population)	6,480	15	5,995
ALL HEALTH OUTCOMES	0.27	3	0.35
OVERALL	0.48	16	1.06

— indicates data not available. *See measure description for full details.