

Ranking: New Hampshire is 5th this year; it was 6th in 2008.

Strengths: Strengths include a low percentage of children in poverty at 8.6 percent of persons under age 18, high immunization coverage with 85.0 percent of children ages 19 to 35 months receiving complete immunizations, a low violent crime rate at 157 offenses per 100,000 population, low geographic disparity within the state at 5.7 percent, a low premature death rate with 5,749 years of potential life lost before age 75 per 100,000 population and a low infant mortality rate at 5.7 deaths per 1,000 live births.

Challenges: Challenges include moderate public health funding at \$59 per person and a moderate rate of cancer deaths at 196.8 deaths per 100,000 population.

Significant Changes:

▼ In the past year, immunization coverage decreased from 93.2 percent to 85.0 percent of children ages 19 to 35 months receiving complete immunizations.

- ▲ In the past five years, the infant mortality rate increased from 4.4 to 5.7 deaths per 1,000 live births.
- ▲ In the past ten years, the prevalence of obesity increased from 15.6 percent to 24.8 percent of the population.
- ▼ Since 1990, the prevalence of smoking decreased from 30.7 percent to 17.0 percent of the population.

Health Disparities: In New Hampshire, obesity is more prevalent among Hispanics at 32.2 percent than non-Hispanic whites at 24.1 percent. The prevalence of diabetes also varies by race and ethnicity in the state; 11.5 percent of Hispanics have diabetes compared to 7.2 percent of non-Hispanic whites. In addition, mortality rates vary in New Hampshire, with 328.1 deaths per 100,000 population among Hispanics compared to whites, who experience 769.1 deaths per 100,000 population.

State Health Department Web Site:
www.dhhs.state.nh.us

Overall Rank: 5

Change: ▲ 1

Determinants Rank: 4

Outcomes Rank: 8

Strengths:

- Low percentage of children in poverty
- High immunization coverage
- Low violent crime rate
- Low premature death rate

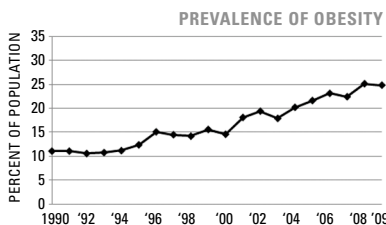
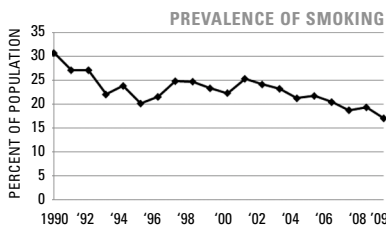
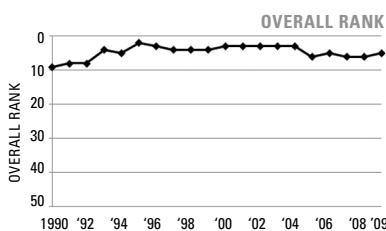
Challenges:

- Moderate per capita public health funding
- Moderate rate of cancer deaths

Significant Changes:

- In the past year, immunization coverage decreased by 9%
- In the past five years, the infant mortality rate increased by 30%
- In the past ten years, the prevalence of obesity increased by 59%
- Since 1990, the prevalence of smoking decreased by 45%

ECONOMIC ENVIRONMENT	
Unemployment Rate (Aug 2009)	6.9%
Underemployment Rate (2008)	7.8%
Median Household Income (2008)	\$66,176



	2009		NO. 1 STATE
	VALUE	RANK	
DETERMINANTS			
Prevalence of Smoking (Percent of population)	17.0	15	9.3
Prevalence of Binge Drinking (Percent of population)	16.0	28	9.0
Prevalence of Obesity (Percent of population)	24.8	11	19.1
High School Graduation (Percent of incoming ninth graders)	81.1	11	87.5
BEHAVIORS			
Violent Crime (Offenses per 100,000 population)	157	3	118
Occupational Fatalities (Deaths per 100,000 workers)	3.8	9	3.1
Infectious Disease (Cases per 100,000 population)	7.6	10	2.4
Children in Poverty (Percent of persons under age 18)	8.6	1	8.6
Air Pollution (Micrograms of fine particles per cubic meter)	8.8	14	4.8
COMMUNITY & ENVIRONMENT			
Lack of Health Insurance (Percent without health insurance)	10.3	10	5.4
Public Health Funding (Dollars per person)	\$59	35	\$220
Immunization Coverage (Percent of children ages 19 to 35 months)	85.0	1	85.0
PUBLIC & HEALTH POLICIES			
Prenatal Care (Percent of pregnant women)*	69.6	—	—
Primary Care Physicians (Number per 100,000 population)	127.0	13	190.0
Preventable Hospitalizations (Number per 1,000 Medicare enrollees)	61.5	11	29.3
CLINICAL CARE			
ALL DETERMINANTS	0.64	4	0.83
HEALTH OUTCOMES			
Poor Mental Health Days (Days in previous 30 days)	3.3	22	2.2
Poor Physical Health Days (Days in previous 30 days)	3.2	8	2.7
Geographic Disparity (Relative standard deviation)	5.7	2	4.3
Infant Mortality (Deaths per 1,000 live births)	5.7	9	4.8
Cardiovascular Deaths (Deaths per 100,000 population)	255.4	16	212.6
Cancer Deaths (Deaths per 100,000 population)	196.8	30	144.7
Premature Death (Years lost per 100,000 population)	5,749	2	5,995
ALL HEALTH OUTCOMES	0.25	8	0.35
OVERALL	0.89	5	1.06

— indicates data not available. *See measure description for full details.