

Ranking: New Mexico is 31st this year; it was 28th in 2008.

Strengths: Strengths include high public health funding at \$132 per person, low levels of air pollution at 6.5 micrograms of fine particulate per cubic meter, a low prevalence of binge drinking at 11.9 percent of the population, a low rate of cancer deaths at 170.0 deaths per 100,000 population and a low rate of deaths from cardiovascular disease at 241.6 deaths per 100,000 population.

Challenges: Challenges include a high rate of uninsured population at 23.1 percent, a high percentage of children in poverty at 25.9 percent of persons under age 18, a low high school graduation rate with 67.3 percent of incoming ninth graders who graduate within four years, a high violent crime rate at 650 offenses per 100,000 population and high geographic disparity within the state at 15.7 percent.

Significant Changes:

▲ In the past year, the percentage of children in poverty increased from 18.1 percent to 25.9 percent of persons under age 18.

- ▲ In the past five years, the prevalence of obesity increased from 20.2 percent to 25.7 percent of the population.
- ▲ In the past ten years, immunization coverage increased from 43.8 percent to 79.1 percent of children ages 19 to 35 months receiving complete immunizations.
- ▼ Since 1990, the prevalence of smoking declined from 28.5 percent to 19.3 percent of the population.

Health Disparities: In New Mexico, obesity is more prevalent among non-Hispanic American Indians at 34.7 percent than non-Hispanic whites at 20.2 percent and Hispanics at 28.8 percent. The prevalence of diabetes also varies by race and ethnicity in the state; 11.3 percent of non-Hispanic American Indians have diabetes compared to 6.1 percent of non-Hispanic whites and 9.2 percent of Hispanics. In addition, mortality rates vary in New Mexico, with 802.6 deaths per 100,000 population among American Indians compared to whites, who experience 795.4 deaths per 100,000 population, and Hispanics, who experience 769.2 deaths per 100,000 population.

State Health Department Web Site:
www.health.state.nm.us

Overall Rank: 31

Change: ▼ 3

Determinants Rank: 31

Outcomes Rank: 29

Strengths:

- Low prevalence of binge drinking
- High per capita public health funding
- Low levels of air pollution

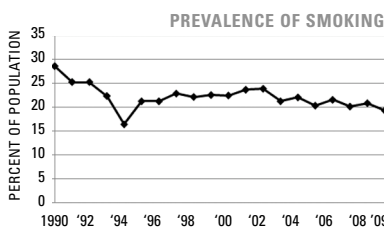
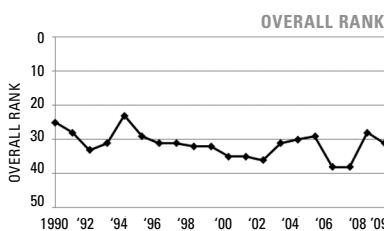
Challenges:

- High rate of uninsured population
- High percentage of children in poverty
- Low high school graduation rate

Significant Changes:

- In the past year, the percentage of children in poverty increased by 43%
- In the past five years, the prevalence of obesity increased by 27%
- In the past ten years, immunization coverage increased by 81%
- Since 1990, the prevalence of smoking decreased by 32%

ECONOMIC ENVIRONMENT	
Unemployment Rate (Aug 2009)	7.5%
Underemployment Rate (2008)	8.9%
Median Household Income (2008)	\$42,102



DETERMINANTS	2009		NO. 1 STATE
	VALUE	RANK	
BEHAVIORS			
Prevalence of Smoking (Percent of population)	19.3	29	9.3
Prevalence of Binge Drinking (Percent of population)	11.9	8	9.0
Prevalence of Obesity (Percent of population)	25.7	20	19.1
High School Graduation (Percent of incoming ninth graders)	67.3	42	87.5
COMMUNITY & ENVIRONMENT			
Violent Crime (Offenses per 100,000 population)	650	43	118
Occupational Fatalities (Deaths per 100,000 workers)	5.5	26	3.1
Infectious Disease (Cases per 100,000 population)	9.5	15	2.4
Children in Poverty (Percent of persons under age 18)	25.9	49	8.6
Air Pollution (Micrograms of fine particles per cubic meter)	6.5	4	4.8
PUBLIC & HEALTH POLICIES			
Lack of Health Insurance (Percent without health insurance)	23.1	49	5.4
Public Health Funding (Dollars per person)	\$132	4	\$220
Immunization Coverage (Percent of children ages 19 to 35 months)	79.1	15	85.0
CLINICAL CARE			
Prenatal Care (Percent of pregnant women)*	54.6	—	—
Primary Care Physicians (Number per 100,000 population)	113.7	27	190.0
Preventable Hospitalizations (Number per 1,000 Medicare enrollees)	62.8	15	29.3
ALL DETERMINANTS			
	-0.10	31	0.83
HEALTH OUTCOMES			
Poor Mental Health Days (Days in previous 30 days)	3.8	44	2.2
Poor Physical Health Days (Days in previous 30 days)	4.1	44	2.7
Geographic Disparity (Relative standard deviation)	15.7	42	4.3
Infant Mortality (Deaths per 1,000 live births)	6.0	13	4.8
Cardiovascular Deaths (Deaths per 100,000 population)	241.6	7	212.6
Cancer Deaths (Deaths per 100,000 population)	170.0	4	144.7
Premature Death (Years lost per 100,000 population)	8,337	38	5,995
ALL HEALTH OUTCOMES			
	0.03	29	0.35
OVERALL			
	-0.07	31	1.06

— indicates data not available. *See measure description for full details.