

Ranking: Ohio is 33rd this year; it was 34th in 2008.

Strengths: Strengths include a low rate of uninsured population at 11.6 percent, high immunization coverage with 82.9 percent of children ages 19 to 35 months receiving complete immunizations and low geographic disparity within the state at 9.2 percent. Ohio ranks higher for health determinants than for health outcomes, indicating that overall healthiness should improve over time.

Challenges: Challenges include a high prevalence of obesity at 29.2 percent of the population, high levels of air pollution at 13.4 micrograms of fine particulate per cubic meter, low public health funding at \$39 per person, a high rate of preventable hospitalizations at 84.2 discharges per 1,000 Medicare enrollees, many poor mental health days per month at 3.9 days in the previous 30 days and a high rate of cancer deaths at 209.1 deaths per 100,000 population.

Significant Changes:

▼ In the past year, the prevalence of smoking decreased from 23.1 percent to 20.1 percent of the population.

- ▲ In the past five years, the percentage of children in poverty increased from 16.5 percent to 21.0 percent of persons under age 18.
- ▲ In the past ten years, immunization coverage increased from 47.7 percent to 82.9 percent of children ages 19 to 35 months receiving complete immunizations.
- ▲ Since 1990, the prevalence of obesity increased from 11.3 percent to 29.2 percent of the population.

Health Disparities: In Ohio, obesity is more prevalent among non-Hispanic blacks at 43.1 percent than non-Hispanic whites at 27.7 percent. The prevalence of diabetes also varies by race and ethnicity in the state; 14.4 percent of non-Hispanic blacks have diabetes compared to 8.1 percent of non-Hispanic whites. In addition, mortality rates vary in Ohio, with 1,093.4 deaths per 100,000 population among blacks compared to whites, who experience 856.7 deaths per 100,000 population.

State Health Department Web Site: www.odh.ohio.gov

Overall Rank: 33

Change: ▲ 1

Determinants Rank: 28

Outcomes Rank: 36

Strengths:

- Low rate of uninsured population
- High immunization coverage
- Low geographic disparity within the state

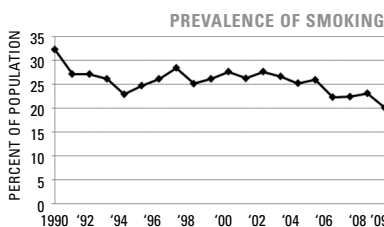
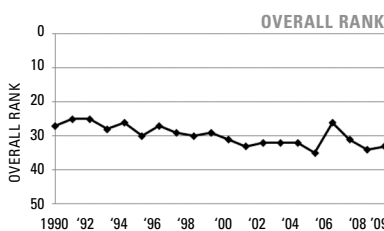
Challenges:

- High levels of air pollution
- High prevalence of obesity
- Low per capita public health funding

Significant Changes:

- In the past year, the prevalence of smoking decreased by 13%
- In the past five years, the percentage of children in poverty increased by 27%
- In the past ten years, immunization coverage increased by 74%
- Since 1990, the prevalence of obesity increased by 158%

ECONOMIC ENVIRONMENT	
Unemployment Rate (Aug 2009)	10.8%
Underemployment Rate (2008)	11.4%
Median Household Income (2008)	\$46,934



DETERMINANTS	2009		NO. 1 STATE
	VALUE	RANK	
BEHAVIORS			
Prevalence of Smoking (Percent of population)	20.1	34	9.3
Prevalence of Binge Drinking (Percent of population)	16.4	31	9.0
Prevalence of Obesity (Percent of population)	29.2	40	19.1
High School Graduation (Percent of incoming ninth graders)	79.2	19	87.5
COMMUNITY & ENVIRONMENT			
Violent Crime (Offenses per 100,000 population)	348	26	118
Occupational Fatalities (Deaths per 100,000 workers)	4.0	12	3.1
Infectious Disease (Cases per 100,000 population)	10.0	18	2.4
Children in Poverty (Percent of persons under age 18)	21.0	38	8.6
Air Pollution (Micrograms of fine particles per cubic meter)	13.4	44	4.8
PUBLIC & HEALTH POLICIES			
Lack of Health Insurance (Percent without health insurance)	11.6	15	5.4
Public Health Funding (Dollars per person)	\$39	47	\$220
Immunization Coverage (Percent of children ages 19 to 35 months)	82.9	6	85.0
CLINICAL CARE			
Prenatal Care (Percent of pregnant women)*	59.6	—	—
Primary Care Physicians (Number per 100,000 population)	118.9	20	190.0
Preventable Hospitalizations (Number per 1,000 Medicare enrollees)	84.2	41	29.3
ALL DETERMINANTS			
	-0.06	28	0.83
HEALTH OUTCOMES			
Poor Mental Health Days (Days in previous 30 days)	3.9	45	2.2
Poor Physical Health Days (Days in previous 30 days)	3.6	32	2.7
Geographic Disparity (Relative standard deviation)	9.2	14	4.3
Infant Mortality (Deaths per 1,000 live births)	8.0	39	4.8
Cardiovascular Deaths (Deaths per 100,000 population)	310.7	38	212.6
Cancer Deaths (Deaths per 100,000 population)	209.1	42	144.7
Premature Death (Years lost per 100,000 population)	7,720	28	5,995
ALL HEALTH OUTCOMES			
	-0.03	36	0.35
OVERALL			
	-0.08	33	1.06

— indicates data not available. *See measure description for full details.