

Ranking: Oregon is 13th this year; it was 18th in 2008.

Strengths: Strengths include a low prevalence of smoking at 16.3 percent of the population, a low rate of preventable hospitalizations with 46.6 discharges per 1,000 Medicare enrollees, few poor mental health days per month at 2.9 days in the previous 30 days and a low infant mortality rate at 5.7 deaths per 1,000 live births.

Challenges: Challenges include a high rate of uninsured population at 16.5 percent, low immunization coverage with 72.3 percent of children ages 19 to 35 months receiving complete immunizations and low public health funding at \$49 per person.

Significant Changes:

- ▼ In the past year, the rate of preventable hospitalizations decreased from 51.2 to 46.6 discharges per 1,000 Medicare enrollees.
- ▼ In the past five years, the percentage of children in poverty decreased from 20.1 percent to 14.3 percent of persons under age 18.

▼ In the past ten years, the prevalence of smoking decreased from 21.1 percent to 16.3 percent of the population.

▲ Since 1990, the prevalence of obesity increased from 10.9 percent to 24.9 percent of the population.

Health Disparities: In Oregon, obesity is more prevalent among non-Hispanic whites at 25.5 percent than Hispanics at 23.2 percent. The prevalence of diabetes also varies by race and ethnicity in the state; 6.8 percent of non-Hispanic whites have diabetes compared to 4.4 percent of Hispanics. In addition, mortality rates vary in Oregon, with 804.7 deaths per 100,000 population among whites compared to Hispanics, who experience 436.7 deaths per 100,000 population.

State Health Department Web Site:
www.oregon.gov/dhs/ph

Overall Rank: 13

Change: ▲5

Determinants Rank: 14

Outcomes Rank: 11

Strengths:

- Low prevalence of smoking
- Low rate of preventable hospitalizations
- Low infant mortality rate

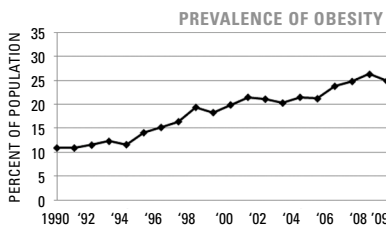
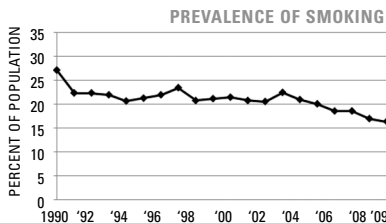
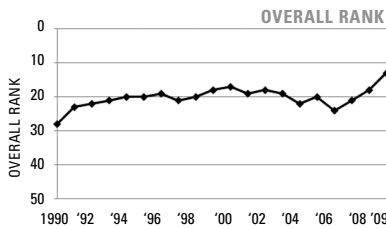
Challenges:

- High rate of uninsured population
- Low per capita public health funding
- Low immunization coverage

Significant Changes:

- In the past year, the rate of preventable hospitalizations decreased by 9%
- In the past five years, the percentage of children in poverty declined by 29%
- In the past ten years, the prevalence of smoking decreased by 23%
- Since 1990, the prevalence of obesity increased by 128%

ECONOMIC ENVIRONMENT	
Unemployment Rate (Aug 2009)	12.2%
Underemployment Rate (2008)	12.6%
Median Household Income (2008)	\$51,727



DETERMINANTS	2009		NO. 1 STATE
	VALUE	RANK	
BEHAVIORS			
Prevalence of Smoking (Percent of population)	16.3	10	9.3
Prevalence of Binge Drinking (Percent of population)	14.3	19	9.0
Prevalence of Obesity (Percent of population)	24.9	12	19.1
High School Graduation (Percent of incoming ninth graders)	73.0	33	87.5
COMMUNITY & ENVIRONMENT			
Violent Crime (Offenses per 100,000 population)	257	11	118
Occupational Fatalities (Deaths per 100,000 workers)	4.0	12	3.1
Infectious Disease (Cases per 100,000 population)	11.4	23	2.4
Children in Poverty (Percent of persons under age 18)	14.3	13	8.6
Air Pollution (Micrograms of fine particles per cubic meter)	8.1	11	4.8
PUBLIC & HEALTH POLICIES			
Lack of Health Insurance (Percent without health insurance)	16.5	39	5.4
Public Health Funding (Dollars per person)	\$49	42	\$220
Immunization Coverage (Percent of children ages 19 to 35 months)	72.3	46	85.0
CLINICAL CARE			
Prenatal Care (Percent of pregnant women)*	69.3	—	—
Primary Care Physicians (Number per 100,000 population)	124.9	16	190.0
Preventable Hospitalizations (Number per 1,000 Medicare enrollees)	46.6	3	29.3
ALL DETERMINANTS	0.32	14	0.83
HEALTH OUTCOMES			
Poor Mental Health Days (Days in previous 30 days)	2.9	6	2.2
Poor Physical Health Days (Days in previous 30 days)	3.4	21	2.7
Geographic Disparity (Relative standard deviation)	10.1	18	4.3
Infant Mortality (Deaths per 1,000 live births)	5.7	9	4.8
Cardiovascular Deaths (Deaths per 100,000 population)	254.6	15	212.6
Cancer Deaths (Deaths per 100,000 population)	195.0	26	144.7
Premature Death (Years lost per 100,000 population)	6,696	19	5,995
ALL HEALTH OUTCOMES	0.21	11	0.35
OVERALL	0.53	13	1.06

— indicates data not available. *See measure description for full details.