

Ranking: Rhode Island is 10th this year, unchanged from 2008.

Strengths: Strengths include a low prevalence of obesity at 22.0 percent of the population, a low violent crime rate at 249 offenses per 100,000 population, ready availability of primary care physicians with 169.6 primary care physicians per 100,000 population and low geographic disparity within the state at 6.8 percent. Rhode Island ranks higher for health determinants than for health outcomes, indicating that overall healthiness should improve over time.

Challenges: Challenges include a high prevalence of binge drinking at 18.0 percent of the population and a high rate of preventable hospitalizations with 78.5 discharges per 1,000 Medicare enrollees.

Significant Changes:

- ▲ In the past year, the rate of uninsured population increased from 9.7 percent to 11.3 percent.
- ▼ In the past five years, the incidence of infectious disease decreased from 20.7 to 13.7 cases per 100,000 population.

- ▲ In the past ten years, immunization coverage increased from 58.5 percent to 79.5 percent of children ages 19 to 35 months receiving complete immunizations.
- ▼ Since 1990, the prevalence of smoking declined from 34.4 percent to 17.3 percent of the population.

Health Disparities: In Rhode Island, obesity is more prevalent among non-Hispanic blacks at 27.7 percent than non-Hispanic whites at 21.1 percent. The prevalence of diabetes also varies by race and ethnicity in the state; 13.2 percent of non-Hispanic blacks have diabetes compared to 7.0 percent of non-Hispanic whites. In addition, mortality rates vary in Rhode Island, with 875.0 deaths per 100,000 population among blacks compared to whites, who experience 786.3 deaths per 100,000 population.

State Health Department Web Site:
www.health.state.ri.us

Overall Rank: 10

Change: no change

Determinants Rank: 10

Outcomes Rank: 18

Strengths:

- Low prevalence of obesity
- Ready availability of primary care physicians
- Low geographic disparity within the state
- Low violent crime rate

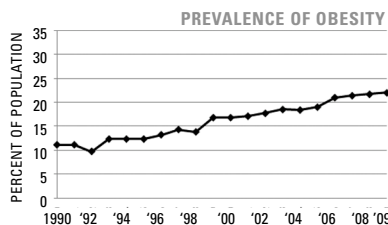
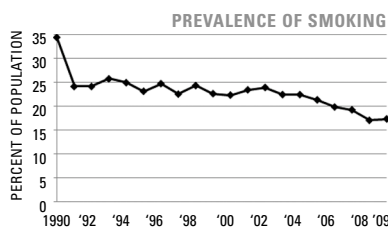
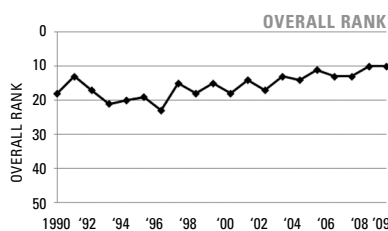
Challenges:

- High prevalence of binge drinking
- High rate of preventable hospitalizations

Significant Changes:

- In the past year, the rate of uninsured population increased by 16%
- In the past five years, the incidence of infectious disease decreased by 34%
- In the past ten years, immunization coverage increased by 36%
- Since 1990, the prevalence of smoking decreased by 50%

ECONOMIC ENVIRONMENT	
Unemployment Rate (Aug 2009)	12.8%
Underemployment Rate (2008)	13.2%
Median Household Income (2008)	\$53,241



	2009		NO. 1 STATE
	VALUE	RANK	
DETERMINANTS			
BEHAVIORS			
Prevalence of Smoking (Percent of population)	17.3	16	9.3
Prevalence of Binge Drinking (Percent of population)	18.0	42	9.0
Prevalence of Obesity (Percent of population)	22.0	4	19.1
High School Graduation (Percent of incoming ninth graders)	77.8	21	87.5
COMMUNITY & ENVIRONMENT			
Violent Crime (Offenses per 100,000 population)	249	9	118
Occupational Fatalities (Deaths per 100,000 workers)	5.2	22	3.1
Infectious Disease (Cases per 100,000 population)	13.7	27	2.4
Children in Poverty (Percent of persons under age 18)	19.3	29	8.6
Air Pollution (Micrograms of fine particles per cubic meter)	10.1	21	4.8
PUBLIC & HEALTH POLICIES			
Lack of Health Insurance (Percent without health insurance)	11.3	13	5.4
Public Health Funding (Dollars per person)	\$105	12	\$220
Immunization Coverage (Percent of children ages 19 to 35 months)	79.5	13	85.0
CLINICAL CARE			
Prenatal Care (Percent of pregnant women)*	70.5	—	—
Primary Care Physicians (Number per 100,000 population)	169.6	3	190.0
Preventable Hospitalizations (Number per 1,000 Medicare enrollees)	78.5	35	29.3
ALL DETERMINANTS	0.40	10	0.83
HEALTH OUTCOMES			
Poor Mental Health Days (Days in previous 30 days)	3.5	32	2.2
Poor Physical Health Days (Days in previous 30 days)	3.4	21	2.7
Geographic Disparity (Relative standard deviation)	6.8	6	4.3
Infant Mortality (Deaths per 1,000 live births)	6.3	19	4.8
Cardiovascular Deaths (Deaths per 100,000 population)	283.5	28	212.6
Cancer Deaths (Deaths per 100,000 population)	197.8	31	144.7
Premature Death (Years lost per 100,000 population)	6,460	14	5,995
ALL HEALTH OUTCOMES	0.16	18	0.35
OVERALL	0.56	10	1.06

— indicates data not available. *See measure description for full details.