

**Ranking:** Vermont is 1st this year; it was 4th in 2008.

**Strengths:** Vermont ranks among the top ten states on 12 of the 22 measures. Strengths include a low percentage of children in poverty at 9.8 percent of persons under age 18, a low prevalence of obesity at 23.2 percent of the population, a high rate of high school graduation with 82.3 percent of incoming ninth graders who graduate within four years and ready availability of primary care physicians with 168.8 primary care physicians per 100,000 population. Vermont ranks higher for health determinants than for health outcomes, indicating that overall healthiness should remain high over time.

**Challenges:** The primary challenges are a high prevalence of binge drinking at 17.6 percent of the population and moderate immunization coverage with 74.4 percent of children ages 19 to 35 months receiving complete immunizations.

**Significant Changes:**

▼ In the past year, the high school graduation rate declined from 86.5 percent to 82.3 percent of incoming ninth graders who graduate within four years.

▼ In the past five years, the incidence of infectious disease decreased from 8.0 to 4.8 cases per 100,000 population.

▼ In the past ten years, the rate of deaths from cardiovascular disease decreased from 334.8 to 248.9 deaths per 100,000 population.

▼ Since 1990, the prevalence of smoking decreased from 30.7 percent to 16.7 percent of the population.

**Health Disparities:** In Vermont, smoking is more prevalent among Hispanics at 25.4 percent than non-Hispanic whites at 17.0 percent. Mortality rates vary considerably by race and ethnicity in Vermont, with 191.6 deaths per 100,000 population among Hispanics compared to whites, who experience 757.6 deaths per 100,000 population.

**State Health Department Web Site:** [www.healthvermont.gov](http://www.healthvermont.gov)

## Overall Rank: 1

Change: ▲3

Determinants Rank: 1

Outcomes Rank: 9

**Strengths:**

- Low percentage of children in poverty
- Low prevalence of obesity
- High rate of high school graduation
- High per capita public health funding

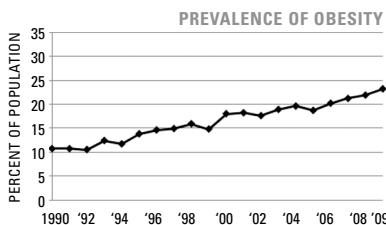
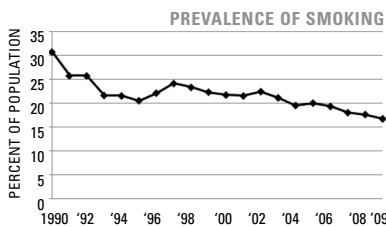
**Challenges:**

- High prevalence of binge drinking
- Moderate immunization coverage

**Significant Changes:**

- In the past year, the high school graduation rate decreased by 5%
- In the past five years, the incidence of infectious disease declined by 40%
- In the past ten years, the rate of deaths from cardiovascular disease decreased by 26%
- Since 1990, the prevalence of smoking decreased by 46%

ECONOMIC ENVIRONMENT	
Unemployment Rate (Aug 2009)	6.8%
Underemployment Rate (2008)	9.1%
Median Household Income (2008)	\$50,706



	2009		NO. 1 STATE
	VALUE	RANK	
<b>DETERMINANTS</b>			
Prevalence of Smoking (Percent of population)	16.7	12	9.3
Prevalence of Binge Drinking (Percent of population)	17.6	37	9.0
Prevalence of Obesity (Percent of population)	23.2	7	19.1
High School Graduation (Percent of incoming ninth graders)	82.3	8	87.5
<b>BEHAVIORS</b>			
Violent Crime (Offenses per 100,000 population)	136	2	118
Occupational Fatalities (Deaths per 100,000 workers)	4.5	17	3.1
Infectious Disease (Cases per 100,000 population)	4.8	5	2.4
Children in Poverty (Percent of persons under age 18)	9.8	4	8.6
Air Pollution (Micrograms of fine particles per cubic meter)	8.1	11	4.8
<b>COMMUNITY &amp; ENVIRONMENT</b>			
Lack of Health Insurance (Percent without health insurance)	10.2	9	5.4
Public Health Funding (Dollars per person)	\$203	2	\$220
Immunization Coverage (Percent of children ages 19 to 35 months)	74.4	37	85.0
<b>PUBLIC &amp; HEALTH POLICIES</b>			
Prenatal Care (Percent of pregnant women)*	86.1	—	—
Primary Care Physicians (Number per 100,000 population)	168.8	5	190.0
Preventable Hospitalizations (Number per 1,000 Medicare enrollees)	55.2	7	29.3
<b>CLINICAL CARE</b>			
<b>ALL DETERMINANTS</b>	0.83	1	0.83
<b>HEALTH OUTCOMES</b>			
Poor Mental Health Days (Days in previous 30 days)	3.4	28	2.2
Poor Physical Health Days (Days in previous 30 days)	3.3	15	2.7
Geographic Disparity (Relative standard deviation)	6.0	4	4.3
Infant Mortality (Deaths per 1,000 live births)	6.1	16	4.8
Cardiovascular Deaths (Deaths per 100,000 population)	248.9	10	212.6
Cancer Deaths (Deaths per 100,000 population)	183.8	12	144.7
Premature Death (Years lost per 100,000 population)	5,977	3	5,995
<b>ALL HEALTH OUTCOMES</b>	0.24	9	0.35
<b>OVERALL</b>	1.06	1	1.06

— indicates data not available. \*See measure description for full details.