

COLORADO

Ranking: Colorado is 9th this year; it was 13th in 2010.

Highlights:

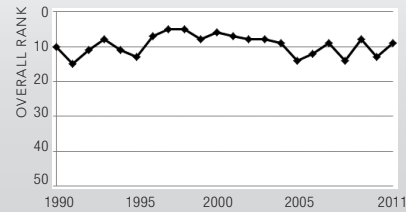
- While Colorado has the lowest obesity rate in the U.S., 814,000 adults in Colorado are obese, an increase of 360,000 individuals in the past 10 years.
- In the past year, the rate of uninsured population decreased from 15.6 percent to 13.8 percent.
- In the past five years, smoking decreased from 19.8 percent to 16.0 percent of adults; however, 609,000 adults still smoke.
- In the past five years, diabetes increased from 4.8 percent to 6.0 percent of adults. There are now 228,000 adults with diabetes in the state.
- In the past ten years, the percentage of children in poverty increased from 10.9 percent to 18.5 percent of persons under age 18.

Health Disparities:

In Colorado, obesity is more prevalent among non-Hispanic blacks at 27.9 percent than non-Hispanic whites at 18.3 percent and Hispanics at 24.8 percent. Diabetes among non-Hispanic blacks at 10.3 percent is double the rate among non-Hispanic whites.

State Health Department Web Site: www.cdphe.state.co.us

Overall Rank: 9



Change: ▲ 4

Determinants Rank: 10

Outcomes Rank: 13

Strengths:

- Low levels of air pollution
- Lower prevalence of obesity than all other states
- Low prevalence of diabetes

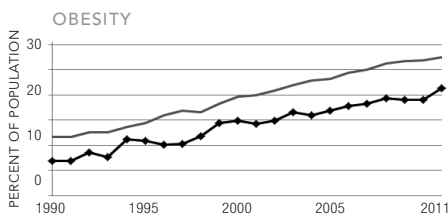
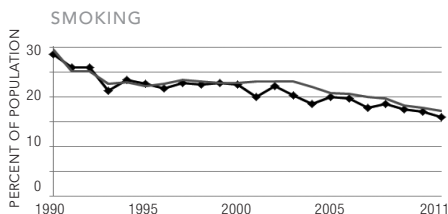
Challenges:

- Low use of early prenatal care
- High geographic disparity within the state
- Low immunization coverage

COLORADO

ECONOMIC ENVIRONMENT	CO	U.S.
Unemployment Rate (Aug 2011)	8.5%	8.3%
Underemployment Rate (2010)	15.4%	16.7%
Median Household Income (2010)	\$60,442	\$49,445

MEASURE	ADULT POPULATION AFFECTED		
	2001	2011	10-YR CHANGE
Smoking	640,000	609,000	-31,000
Obesity	454,000	814,000	360,000
Diabetes	163,000	228,000	65,000



STATE —◆— NATION —



For a more detailed look at this data, visit

www.americashealthrankings.org/CO

	2011		NO. 1 STATE
	VALUE	RANK	
DETERMINANTS			
BEHAVIORS			
Smoking (Percent of adult population)	16.0	18	9.1
Binge Drinking (Percent of adult population)	15.9	30	6.7
Obesity (Percent of adult population)	21.4	1	21.4
High School Graduation (Percent of incoming ninth graders)	75.4	30	89.6
COMMUNITY & ENVIRONMENT			
Violent Crime (Offenses per 100,000 population)	321	26	122
Occupational Fatalities (Deaths per 100,000 workers)	4.3	24	2.5
Infectious Disease (Cases per 100,000 population)	7.3	17	2.3
Children in Poverty (Percent of persons under age 18)	18.5	21	6.2
Air Pollution (Micrograms of fine particles per cubic meter)	7.0	5	5.2
PUBLIC & HEALTH POLICIES			
Lack of Health Insurance (Percent without health insurance)	13.8	24	5.0
Public Health Funding (Dollars per person)	\$89	19	\$244
Immunization Coverage (Percent of children ages 19 to 35 months)	89.7	32	96.0
CLINICAL CARE			
Early Prenatal Care (Percent with visit during first trimester)	68.1	37	—
Primary Care Physicians (Number per 100,000 population)	116.7	25	191.9
Preventable Hospitalizations (per 1,000 Medicare enrollees)	48.1	6	25.6
ALL DETERMINANTS	0.38	10	0.90
OUTCOMES			
Diabetes (Percent of adult population)	6.0	2	5.3
Poor Mental Health Days (Days in previous 30 days)	3.4	19	2.3
Poor Physical Health Days (Days in previous 30 days)	3.2	13	2.6
Geographic Disparity (Relative standard deviation)	17.1	45	4.8
Infant Mortality (Deaths per 1,000 live births)	6.2	17	4.7
Cardiovascular Deaths (Deaths per 100,000 population)	217.0	4	197.2
Cancer Deaths (Deaths per 100,000 population)	163.9	3	137.4
Premature Death (Years lost per 100,000 population)	6,299	14	5481
ALL OUTCOMES	0.17	13	0.32
OVERALL	0.56	9	1.20

— indicates data not available. * See measure description for full details.