

FLORIDA

Ranking: Florida is 33rd this year; it was 36th in 2010.

Highlights:

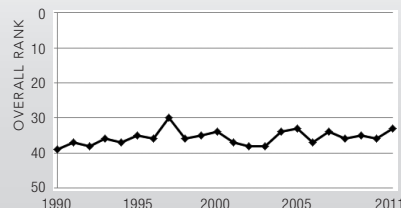
- While smoking has decreased significantly in the past ten years, more than 2.5 million adults still smoke in Florida.
- Over 4 million adults in Florida are obese, 1.7 million more individuals than 10 years ago.
- More than 1.5 million people in Florida have diabetes, an increase of 688,000 people in the last ten years.
- In the past year, the violent crime rate decreased from 613 to 542 offenses per 100,000 population.
- In the past year, the rate of preventable hospitalizations increased from 62.5 to 64.3 discharges per 1,000 Medicare enrollees.
- Florida ranks higher for determinants than for outcomes, indicating that overall healthiness should improve over time.

Health Disparities:

In Florida, obesity is more prevalent among non-Hispanic blacks at 38.8 percent than non-Hispanic whites at 24.1 percent and Hispanics at 28.7 percent. Diabetes also varies by race and ethnicity in the state; 13.4 percent of non-Hispanic blacks have diabetes compared to 9.3 percent of Hispanics and 9.5 percent for non-Hispanic whites.

State Health Department Web Site: www.doh.state.fl.us

Overall Rank: 33



Change: ▲ 3
 Determinants Rank: 30
 Outcomes Rank: 41

Strengths:

- Low prevalence of binge drinking
- High immunization coverage
- Low levels of air pollution

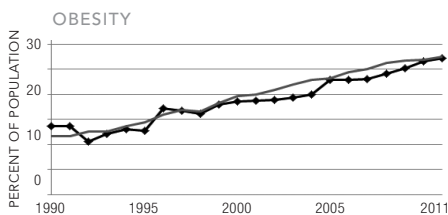
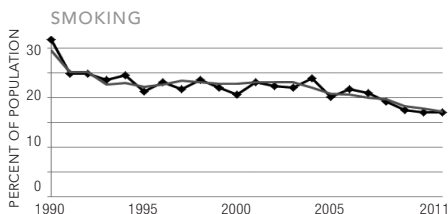
Challenges:

- High rate of uninsured population
- Low high school graduation rate
- High geographic disparity within the state

FLORIDA

ECONOMIC ENVIRONMENT	FL	U.S.
Unemployment Rate (Aug 2011)	10.7%	8.3%
Underemployment Rate (2010)	19.3%	16.7%
Median Household Income (2010)	\$44,243	\$49,445

MEASURE	ADULT POPULATION AFFECTED		
	2001	2011	10-YR CHANGE
Smoking	2,862,000	2,531,000	-331,000
Obesity	2,307,000	4,025,000	1,718,000
Diabetes	851,000	1,539,000	688,000



STATE ◆ NATION □



For a more detailed look at this data, visit

www.americashealthrankings.org/FL

DETERMINANTS	2011		NO. 1 STATE
	VALUE	RANK	
BEHAVIORS			
Smoking (Percent of adult population)	17.1	23	9.1
Binge Drinking (Percent of adult population)	13.6	15	6.7
Obesity (Percent of adult population)	27.2	23	21.4
High School Graduation (Percent of incoming ninth graders)	66.9	44	89.6
COMMUNITY & ENVIRONMENT			
Violent Crime (Offenses per 100,000 population)	542	42	122
Occupational Fatalities (Deaths per 100,000 workers)	4.3	24	2.5
Infectious Disease (Cases per 100,000 population)	8.8	28	2.3
Children in Poverty (Percent of persons under age 18)	22.3	32	6.2
Air Pollution (Micrograms of fine particles per cubic meter)	7.8	10	5.2
PUBLIC & HEALTH POLICIES			
Lack of Health Insurance (Percent without health insurance)	21.3	48	5.0
Public Health Funding (Dollars per person)	\$64	35	\$244
Immunization Coverage (Percent of children ages 19 to 35 months)	94.7	3	96.0
CLINICAL CARE			
Early Prenatal Care (Percent with visit during first trimester)	69.7	32	—
Primary Care Physicians (per 100,000 population)	109.7	30	191.9
Preventable Hospitalizations (Number per 1,000 Medicare enrollees)	64.3	26	25.6
ALL DETERMINANTS	-0.01	30	0.90
OUTCOMES			
Diabetes (Percent of adult population)	10.4	43	5.3
Poor Mental Health Days (Days in previous 30 days)	3.8	38	2.3
Poor Physical Health Days (Days in previous 30 days)	4.1	41	2.6
Geographic Disparity (Relative standard deviation)	21.9	48	4.8
Infant Mortality (Deaths per 1,000 live births)	7.1	29	4.7
Cardiovascular Deaths (Deaths per 100,000 population)	231.4	8	197.2
Cancer Deaths (Deaths per 100,000 population)	182.3	11	137.4
Premature Death (Years lost per 100,000 population)	7,964	35	5481
ALL OUTCOMES	-0.11	41	0.32
OVERALL	-0.12	33	1.20

— indicates data not available. * See measure description for full details.