



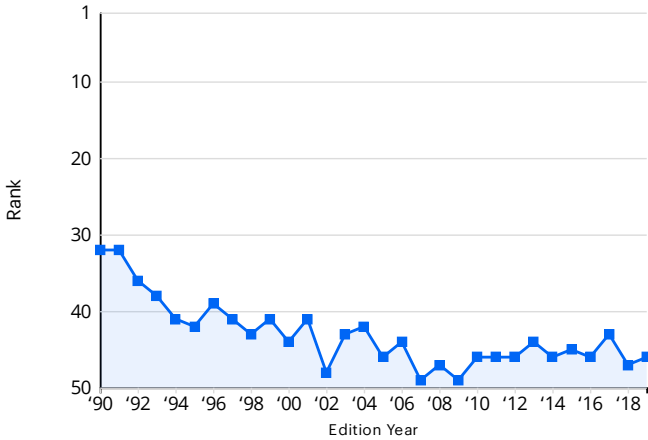
Oklahoma

OVERALL RANK: 46

CHANGE: ▲ 1

DETERMINANTS RANK: 46

OUTCOMES RANK: 46



Rank Based On: Weighted sum of the number of standard deviations each core measure is from the national average.

■ Oklahoma

STRENGTHS

- Low prevalence of excessive drinking
- High rate of mental health providers
- Low prevalence of low birthweight

CHALLENGES

- High prevalence of smoking
- High percentage of uninsured population
- High infant mortality rate

HIGHLIGHTS

- Since 2012, smoking decreased 25% from 26.1% to 19.7% of adults
- In the past year, obesity decreased 5% from 36.5% to 34.8% of adults after generally increasing since 2012
- In the past three years, violent crime increased 10% from 422 to 466 offenses per 100,000 population after generally decreasing since peaking in 1997
- Since 2013, chlamydia increased 46% from 377.9 to 553.4 cases per 100,000 population
- In the past two years, mental health providers increased 5% from 382.7 to 401.4 per 100,000 population

13% from 11.1% to
12.5% of adults

WEBSITE: oklahoma.gov/health

RANKINGS MEASURES

Measure	Rating	2019 Value	2019 Rank
BEHAVIORS			
Drug Deaths (Deaths per 100,000 population)	+++	20.3	28
Excessive Drinking (Percentage of adults)	+++++	14.0%	5
High School Graduation (Percentage of students)	++	82.6%	37
Obesity (Percentage of adults)	++	34.8%	40
Physical Inactivity (Percentage of adults)	+	27.2%	41
Smoking (Percentage of adults)	+	19.7%	42
Behaviors * (All Behaviors Measures)	+	-0.145	42
COMMUNITY & ENVIRONMENT			
Air Pollution (Micrograms of fine particles per cubic meter)	++	8.2	39
Children in Poverty (Percentage of children ages 0-17)	+	21.7%	41
Community and Environment * (All Community & Environment Measures)	+	-0.118	44
Infectious Disease * (Mean z score of chlamydia, pertussis and Salmonella)	+	0.417	43
Chlamydia (Cases per 100,000 population)	++	553.4	36
Pertussis (Cases per 100,000 population)	+++	5.3	23
Salmonella (Cases per 100,000 population)	+	23.4	43
Occupational Fatalities (Deaths per 100,000 workers)	+	7.2	44
Violent Crime (Offenses per 100,000 population)	++	466	39
POLICY			
Immunizations - Adolescents * (Mean z score of HPV, meningococcal and Tdap)	+	-1.232	48
HPV Immunization Females (Percentage of females ages 13-17)	+	43.9%	48
HPV Immunization Males (Percentage of males ages 13-17)	+	32.1%	48
Meningococcal Immunization (Percentage of adolescents ages 13-17)	+	72.9%	47
Tdap Immunization (Percentage of adolescents ages 13-17)	++	87.1%	37
Immunizations - Children (Percentage of children ages 19-35 months)	+	67.3%	43
Public Health Funding (Dollars per person)	+++	\$89	25
Uninsured (Percentage of population)	+	14.2%	49
Policy * (All Policy measures)	+	-0.138	49
CLINICAL CARE			
Dentists (Number per 100,000 population)	+	49.2	41
Low Birthweight (Percentage of live births)	+++	8.1%	22
Mental Health Providers (Number per 100,000 population)	+++++	401.4	7
Preventable Hospitalizations (Discharges per 1,000 Medicare enrollees)	+	59.9	44
Primary Care Physicians (Number per 100,000 population)	++	131.2	37
Clinical Care * (All Clinical Care measures)	++	-0.037	32
ALL DETERMINANTS			
All Determinants * (All Determinants)	+	-0.437	46

Cancer Deaths (Deaths per 100,000 population)	+ 219.2	47
Cardiovascular Deaths (Deaths per 100,000 population)	+ 347.5	49
Diabetes (Percentage of adults)	++ 12.5%	36
Disparity in Health Status (Percentage point difference)	++ 29.0%	38
Frequent Mental Distress (Percentage of adults)	+ 15.4%	43
Frequent Physical Distress (Percentage of adults)	+ 14.9%	43
Infant Mortality (Deaths per 1,000 live births)	+ 7.6	47
Premature Death (Years lost before age 75 per 100,000 population)	+ 9,945	44
All Outcomes* (All Outcomes Measures)	+ -0.340	46

OVERALL

RATING RANK (II) + -0.777 46

+++++	1 – 10
++++	11 – 20
+++	21 – 30
++	31 – 40
+	41 – 50

* Value indicates z score. Negative scores are below US value; positive scores are above US value. For complete definitions of measures including data sources and years, see "[Appendix: Rankings Measures Table](#)".

- Data Unavailable

SUPPLEMENTAL MEASURES

Measure	Rating	2019 Value	2019 Rank
Adverse Childhood Experiences (Percentage of children ages 0-17)	+ 28.5%	50	
Arthritis (Percentage of adults)	++ 28.5%	33	
Asthma (Percentage of adults)	++ 10.3%	40	
Cancer (Percentage of adults)	+++ 7.2%	26	
Cardiovascular Diseases (Percentage of adults)	+ 11.6%	44	
Cholesterol Check (Percentage of adults)	+ 82.0%	44	
Chronic Kidney Disease (Percentage of adults)	+++ 2.9%	22	
Chronic Obstructive Pulmonary Disease (Percentage of adults)	++ 8.5%	39	
Colorectal Cancer Screening (Percentage of adults ages 50-75)	+ 62.7%	45	
Concentrated Disadvantage (Percentage of households)	+++ 21.1%	30	
Dedicated Health Care Provider (Percentage of adults)	++ 75.8%	32	
Dental Visit (Percentage of adults)	+ 60.4%	45	
Depression (Percentage of adults)	+ 23.3%	43	
Disconnected Youth (Percentage of teens and young adults ages 16-24)	+ 13.6%	41	
Economic Hardship Index (Index from 1-100)	++ 65	40	
Fruits (Mean number of fruits per day)	+ 1.1	49	
Heart Attack (Percentage of adults)	+ 5.6%	42	
Heart Disease (Percentage of adults)	+ 5.8%	45	
High Blood Pressure (Percentage of adults)	+ 37.7%	42	
High Cholesterol (Percentage of adults)	+ 37.0%	44	
High Health Status (Percentage of adults)	+ 46.5%	42	

Injury Deaths (Deaths per 100,000 population)	+	971	46
Insufficient Sleep (Percentage of adults)	++	37.0%	33
Median Household Income (Dollars per household)	+	\$54,434	43
Multiple Chronic Conditions (Percentage of adults)	+	12.8%	41
Neighborhood Amenities (Percentage of children ages 0-17)	+	18.4%	49
Seat Belt Use (Percentage of adults)	++	84.2%	31
Severe Housing Problems (Percentage of occupied housing units)	+++	14.2%	13
Stroke (Percentage of adults)	+	4.2%	41
Suicide (Deaths per 100,000 population)	++	19.6	37
Underemployment Rate (Percentage of civilian workforce)	+++	7.5%	24
Unemployment Rate, Annual (Percentage of civilian workforce)	+++	3.4%	15
Vegetables (Mean number of vegetables per day)	+	1.8	45
Voter Registration (Percentage of citizens registered to vote)	++	65.1%	37
Rating Rank on (Percentage of population served)	++	62.6%	36

RATING RANK	
+++++	1 - 10
++++	11 - 20
+++	21 - 30
++	31 - 40
+	41 - 50

For complete definitions of measures including data sources and years, see [Appendix: Supplemental Measures Table](#)".

- Data Unavailable

Obesity



34.8% 

SINCE 2018, OBESITY* **DECREASED 5% FROM 36.5% TO 34.8%**

* Percentage of adults

Diabetes



12.5% 

SINCE 2018, DIABETES* **DECREASED 2% FROM 12.7% TO 12.5%**

* Percentage of adults

Infant Mortality



7.6 

SINCE 2018, INFANT MORTALITY* **INCREASED 3% FROM 7.4 TO 7.6**

* Deaths per 1,000 live births

Children in Poverty



21.7% 

SINCE 2018, CHILDREN IN POVERTY* **DECREASED 5% FROM 22.9% TO 21.7%**

* Percentage of children ages 0-17

Mental Health Providers



401.4 

SINCE 2018, MENTAL HEALTH PROVIDERS* **INCREASED 2% FROM 395.2 TO 401.4**

* Number per 100,000 population

Suicide



19.6 

SINCE 2018, SUICIDE* **DECREASED 8% FROM 21.4 TO 19.6**

* Deaths per 100,000 population



Top 5 States

1: VERMONT



2: MASSACHUSETTS



3: HAWAII



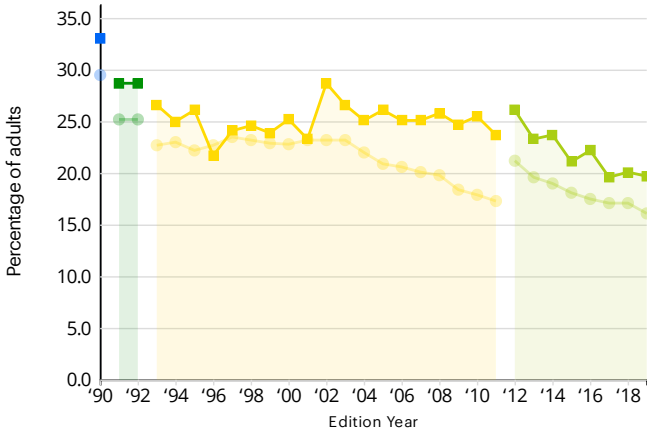
4: CONNECTICUT



5: UTAH



Smoking



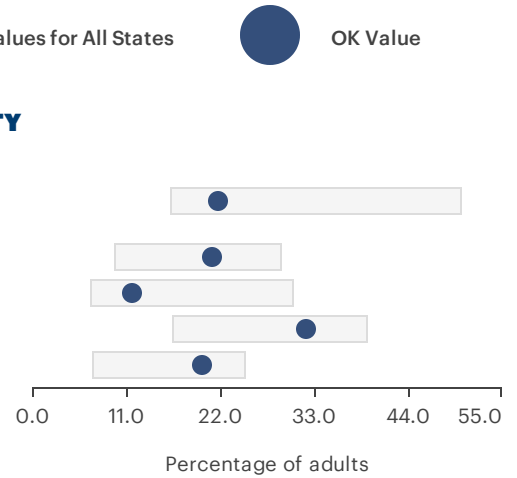
- Percentage of adults age 20+ who are currently smokers
- Percentage of persons age 16+ who smoke tobacco products
- Percentage of adults who reported smoking at least 100 cigarettes in their lifetime and currently smoke daily or some days (pre-2011 BRFSS methodology)
- Percentage of adults who reported smoking at least 100 cigarettes in their lifetime and currently smoke daily or some days

■ Oklahoma ● United States

Range of Values for All States ● OK Value

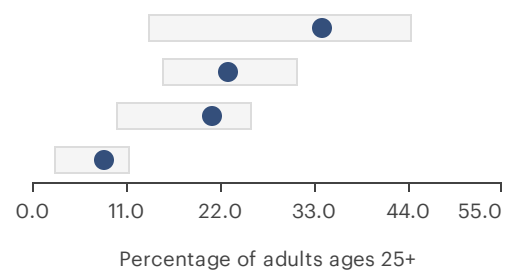
RACE/ETHNICITY

- American Indian/Alaska Native
- Black
- Hispanic
- Multiracial
- White



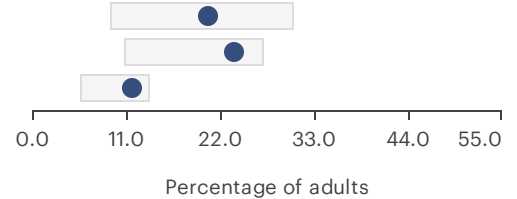
EDUCATION

- Less Than High School
- High School/GED
- Some Post-High School
- College Grad



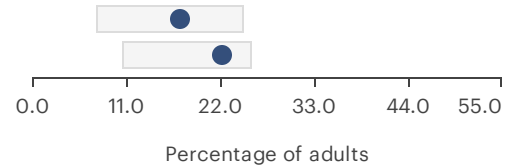
AGE

- Ages 18-44
- Ages 45-64
- Ages 65+



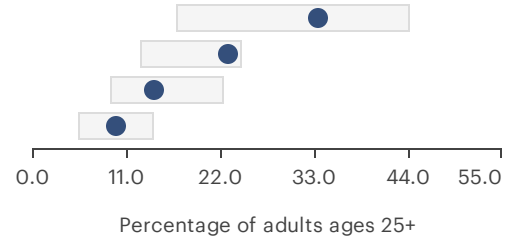
GENDER

- Female
- Male



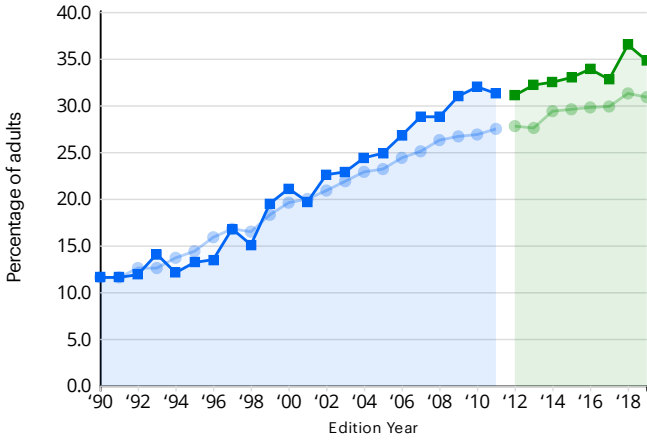
INCOME

- Less Than \$25,000
- \$25-\$49,999
- \$50-\$74,999
- \$75,000 or More



Data suppression rules are as defined by the original source.
Race and ethnicity populations are as defined by the original source.

Obesity



Percentage of adults with a body mass index of 30.0 or higher based on reported height and weight (pre-2011 BRFSS methodology)

Percentage of adults with a body mass index of 30.0 or higher based on reported height and weight

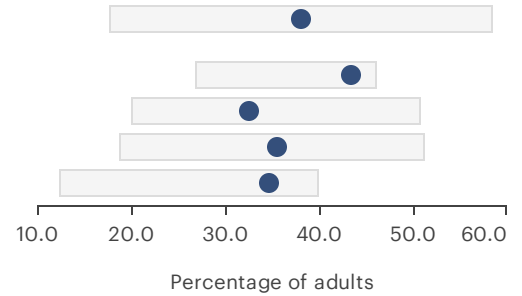
■ Oklahoma

● United States

□ Range of Values for All States **● OK Value**

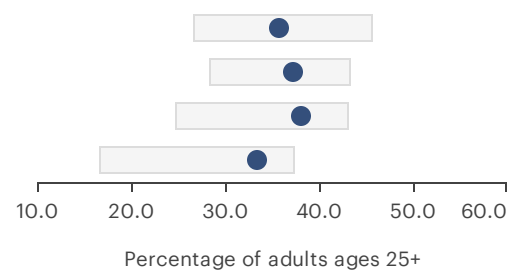
RACE/ETHNICITY

- American Indian/Alaska Native
- Black
- Hispanic
- Multiracial
- White



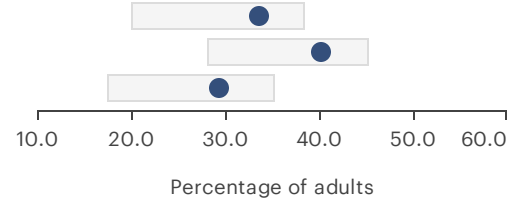
EDUCATION

- Less Than High School
- High School/GED
- Some Post-High School
- College Grad



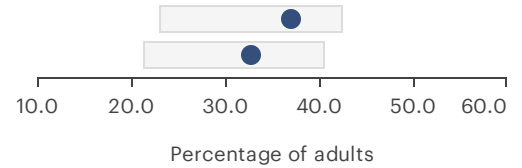
AGE

- Ages 18-44
- Ages 45-64
- Ages 65+



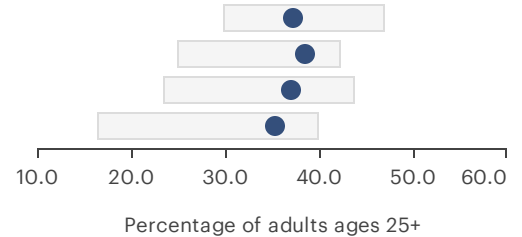
GENDER

- Female
- Male



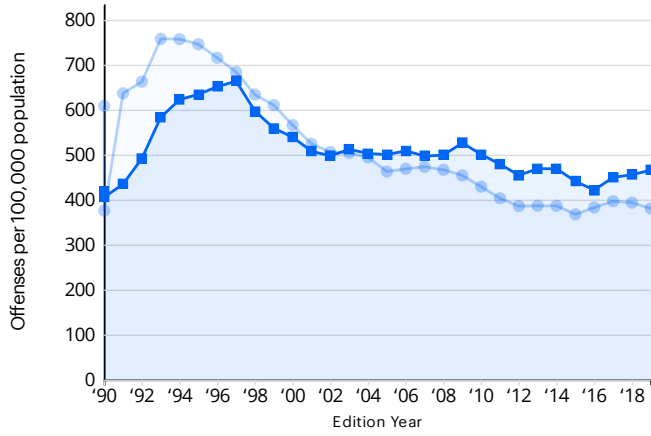
INCOME

- Less Than \$25,000
- \$25-\$49,999
- \$50-\$74,999
- \$75,000 or More



Data suppression rules are as defined by the original source.
Race and ethnicity populations are as defined by the original source.

Violent Crime

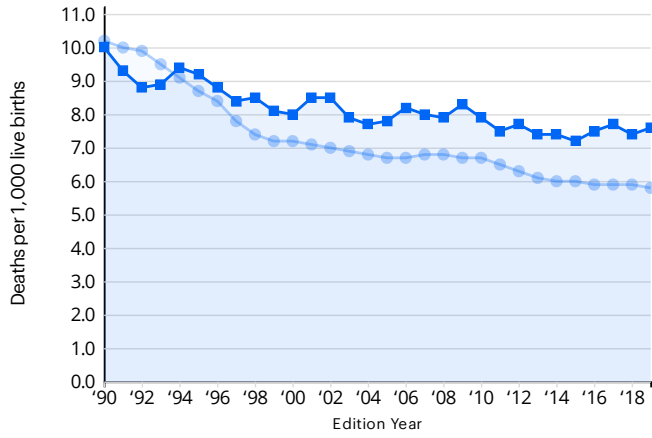


■ Number of murders, rapes, robberies and aggravated assaults per 100,000 population

■ Oklahoma ● United States

Sub-Population Data Unavailable

Infant Mortality

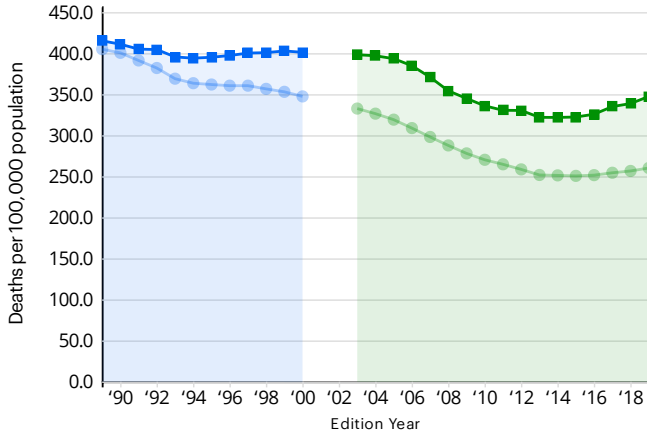


■ Number of infant deaths (before age 1) per 1,000 live births (2-year estimate)

■ Oklahoma ● United States

Sub-Population Data Unavailable

Cardiovascular Deaths



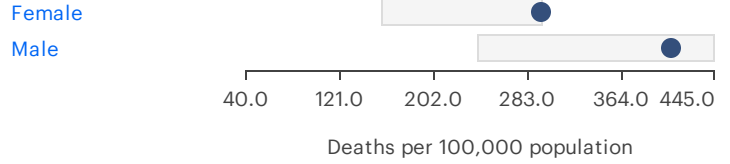
Number of deaths due to all cardiovascular diseases including heart disease and stroke per 100,000 population (3-year estimate age-adjusted to mid-year)(ICD-9)

Number of deaths due to all cardiovascular diseases including heart disease and stroke per 100,000 population (3-year estimate age-adjusted to mid-year)

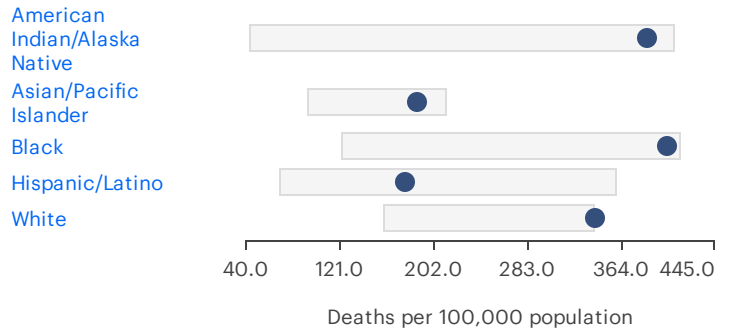
■ Oklahoma ● United States

□ Range of Values for All States ● OK Value

GENDER



RACE/ETHNICITY



AGE-ADJUSTMENT METHODS

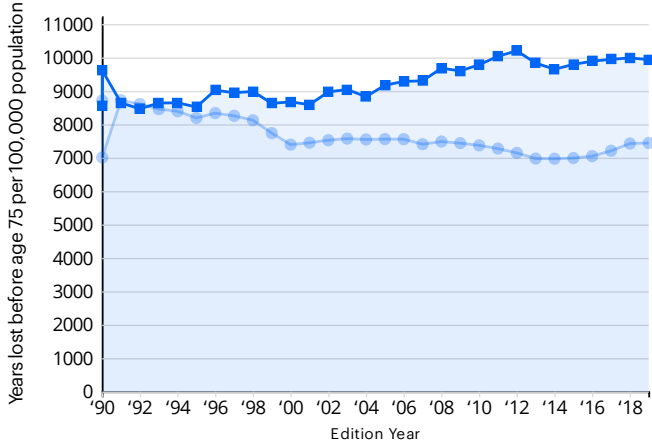



Data suppression rules are as defined by the original source.
Race and ethnicity populations are as defined by the original source.

VIEW OPTIONS:

[View By Other Age-Adjustment Methods](#)

Premature Death

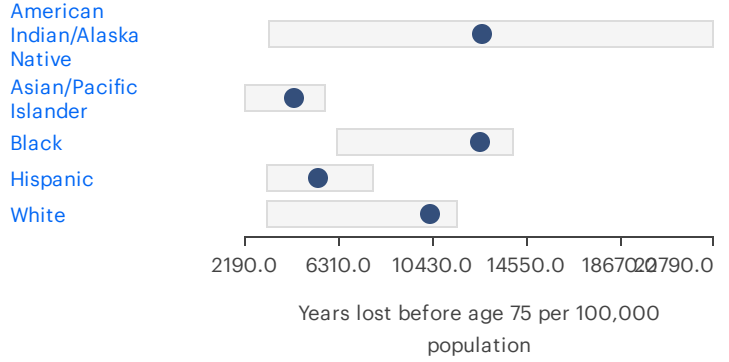


 Years of potential life lost before age 75 per 100,000 population (one-year estimate)

 Oklahoma  United States

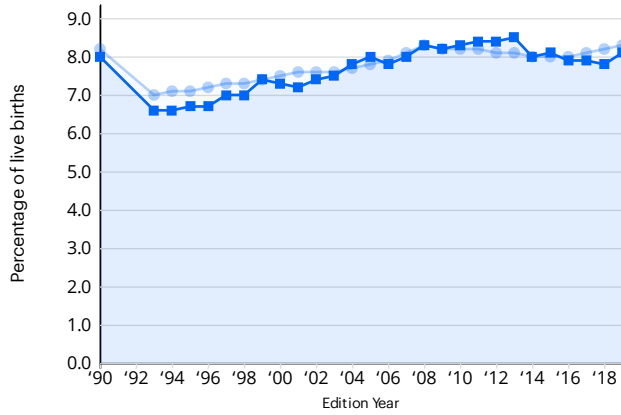
 Range of Values for All States  OK Value

RACE/ETHNICITY



Data suppression rules are as defined by the original source.
Race and ethnicity populations are as defined by the original source.

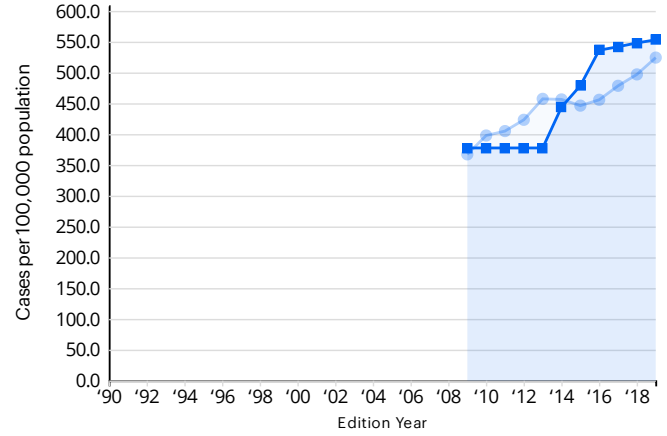
Trend: Low Birthweight, Oklahoma, United States



■ Percentage of infants weighing less than 2,500 grams (5 pounds, 8 ounces) at birth

■ Oklahoma ● United States

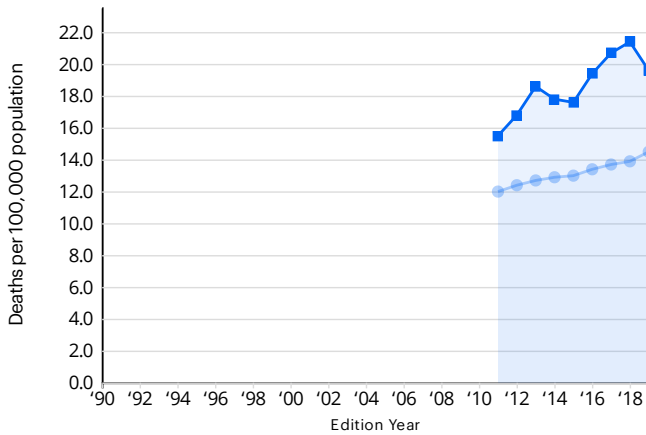
Trend: Chlamydia, Oklahoma, United States



■ Number of new cases of chlamydia per 100,000 population

■ Oklahoma ● United States

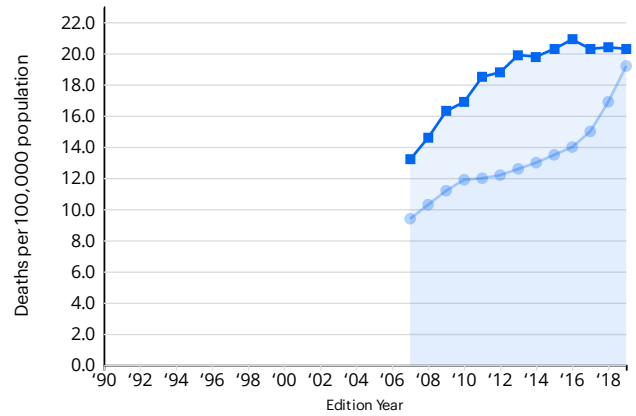
Trend: Suicide, Oklahoma, United States



■ Deaths due to intentional self-harm per 100,000 population

■ Oklahoma ● United States

Trend: Drug Deaths, Oklahoma, United States



■ Number of deaths due to drug injury (unintentional, suicide, homicide or undetermined) per 100,000 population (3-year estimate age-adjusted to mid-year)

■ Oklahoma ● United States